

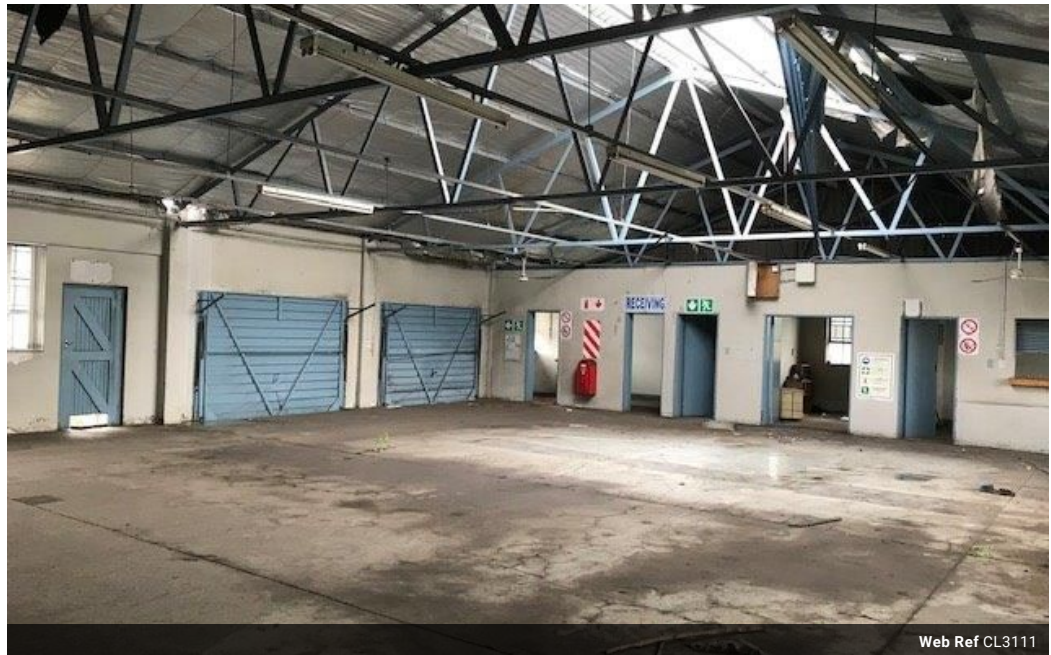


Kevin McKune
083 877 5224
kevin.mckune@seeff.com

Contact Richards Bay

035 7890490

Lira Link Rd, Unit 2 Montego Park, Richards Bay Central, Richards Bay, 3900



Web Ref CL3111



R9,245,000



Industrial Property with Tripple Net Lease Now Available in Richards Bay

We are proud to present the following property available on a tripple net lease at a monthly rental of R70â€™000.00 ex VAT for a minimum term of three years at an escalation of 9%.

The subject property measuring approximately 12 504 m2; of irregular shape and reasonably level, developed land.

Features:

The property is improved with several buildings measuring approximately 1 482m2 in total with details as follows:

Building 1 â€“ Offices â€“ single storey face brick with IBR roof measuring approximately 242m2.

Building 2 â€“ Offices â€“ single storey face brick with IBR roof measuring approximately 359m2.

Building 3 â€“ Store room â€“ single storey face brick with IBR roof measuring approximately 97m2

Features

- Zoning** Commercial
- Sizes**
- Land Size 12,504m²

