

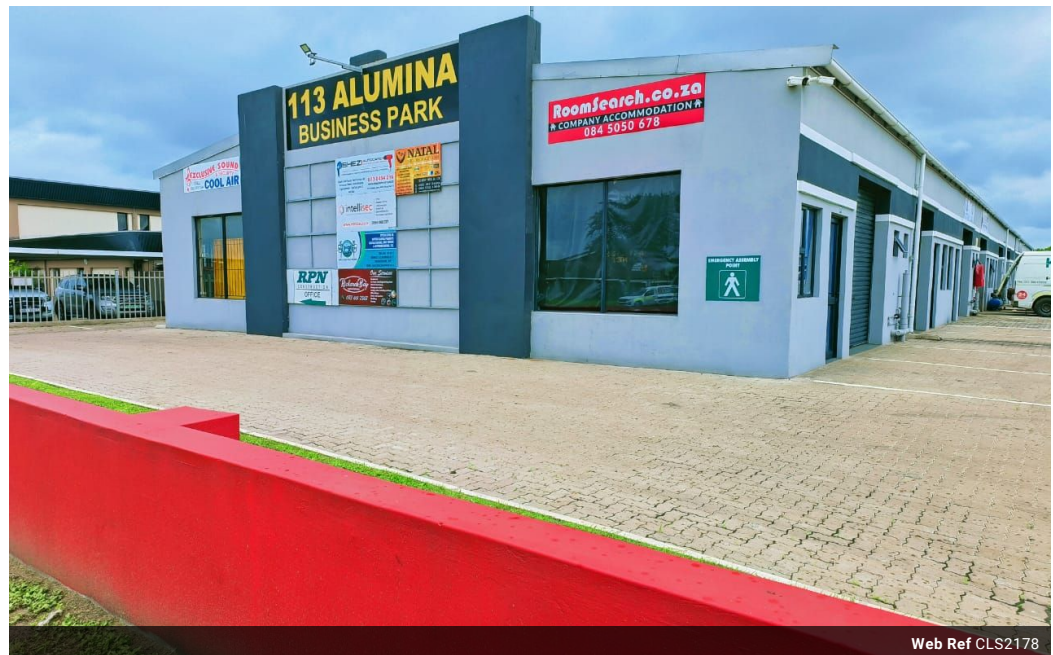


Renaav Moodley
083 236 0712
renaav.moodley@seeff.com

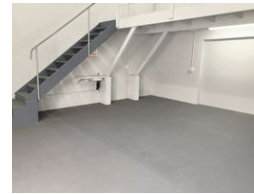
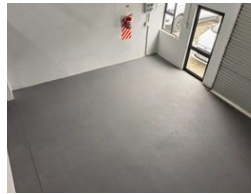
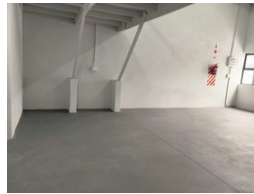
Contact Richards Bay

035 7890490

Lira Link Rd, Unit 2 Montego Park, Richards Bay Central, Richards Bay, 3900



Web Ref CLS2178



R650,000

Monthly Levy R800 Excl. VAT

Monthly Rates R800 Excl. VAT



Calling all commercial property investors and business enthusiasts!

We've got a MULTI-purpose property for sale. This property is strategically situated in the business hub of Alton. This unit has 117 square meters of usable floor area as an added bonus the unit has been dry-walled to create an office.

Features

Zoning Commercial

Sizes

Floor Size 50m²

Land Size 6,224m²