



**Renaav Moodley**  
 083 236 0712  
 renaav.moodley@seeff.com

Contact Richards Bay

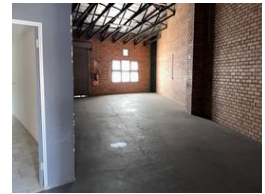
035 7890490

Lira Link Rd, Unit 2 Montego Park, Richards Bay Central, Richards Bay, 3900

171m<sup>2</sup> Office For Sale in Alton



Web Ref CLS2143



R1,695,000

Monthly Levy R1,200 Excl. VAT

Monthly Rates R1,000 Excl. VAT



Commercial Property for sale in Alton

Located on 81 Ceramic Curve, this unit has a usable floor area of 171 square meters.

This unit has been divided with partitioning allowing for 3 office spaces. This is a great investment opportunity situated close to all amenities.

Features

**Zoning** Commercial

**Interior**  
 Power 3 Phase Yes

**Sizes**  
 Floor Size 171m<sup>2</sup>  
 Land Size 7,083m<sup>2</sup>