

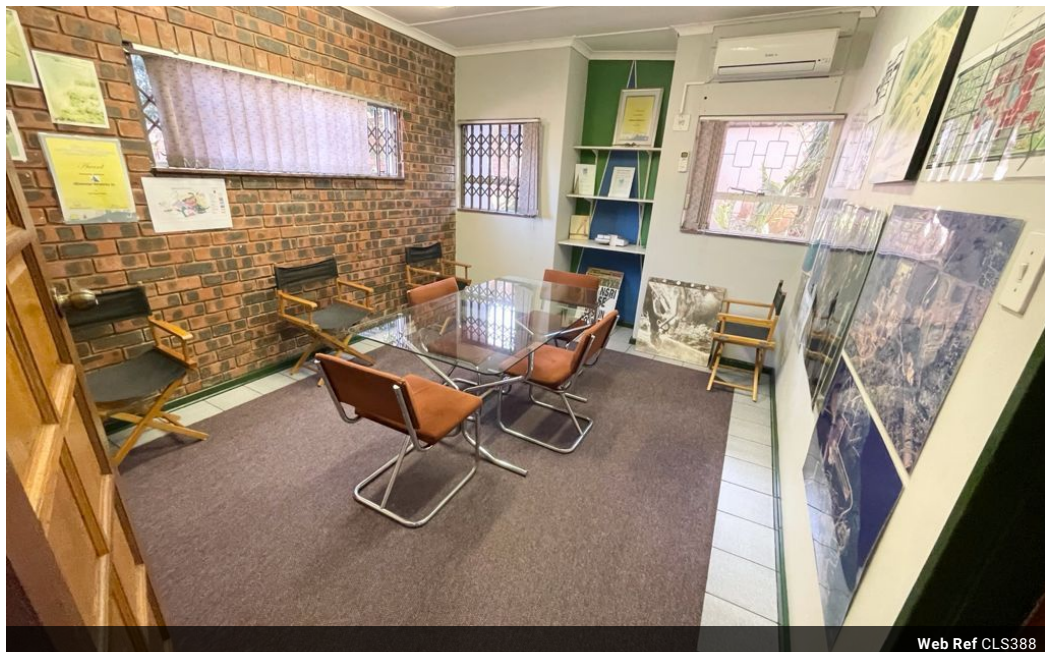


Kevin McKune  
083 877 5224  
kevin.mckune@seeff.com

Contact Richards Bay

035 7890490

Lira Link Rd, Unit 2 Montego Park, Richards Bay Central, Richards Bay, 3900



Web Ref CLS388



R2,490,000

Monthly Rates R5,081 Excl. VAT

0 0

Commercial office space in the heart of Meerensee

Unit 1 - 162m<sup>2</sup>  
Consists of 4 offices as well as a large open plan reception and office area.

Unit 2 - 106m<sup>2</sup>  
Consists of 4 offices as well as a reception area with a reception counter and waiting area.

### Features

**Zoning** Commercial

**Sizes**

Floor Size 276m<sup>2</sup>  
Land Size 550m<sup>2</sup>

**Extras**

Air Conditioner Open Plan Carpets Tiled Floors

