



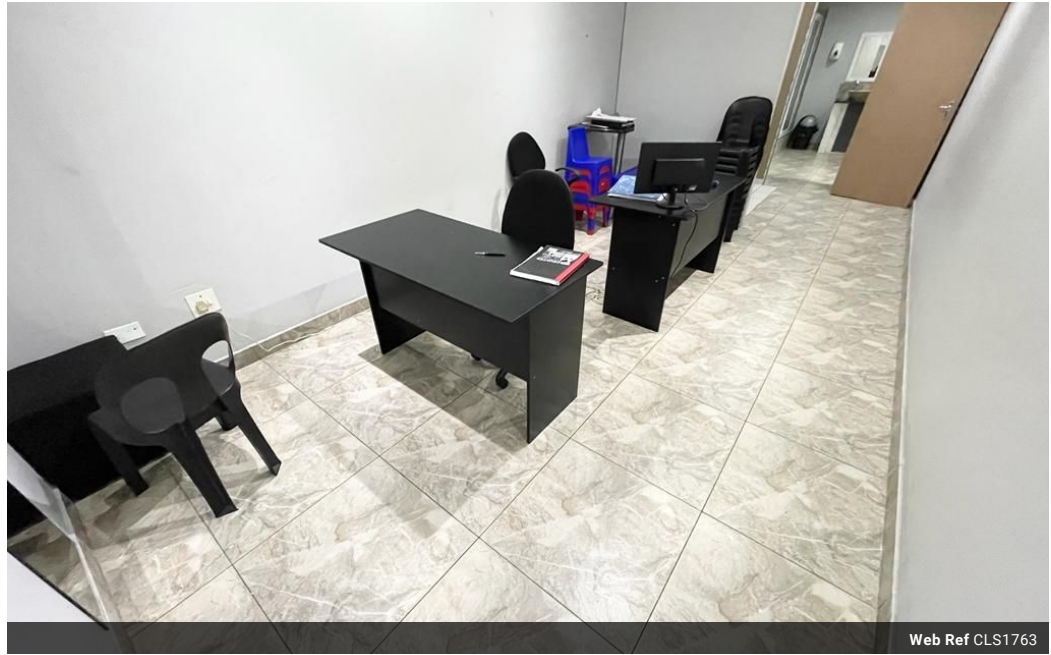
Kevin McKune
 083 877 5224
 kevin.mckune@seeff.com

Contact Richards Bay

035 7890490

Lira Link Rd, Unit 2 Montego Park, Richards Bay Central, Richards Bay, 3900

241m² Office For Sale in Richards Bay Central



Web Ref CLS1763



R2,990,000

Monthly Levy R4,400 Excl. VAT

Monthly Rates R3,300 Excl. VAT



High Visibility. Prime Position. Ideal Investment

Located within the busy Richards Bay CBD, this unit boasts many features and lends itself to a multitude of business uses.

- Open plan office space
- Separate office
- Bathrooms (2 toilets, 2 basins, 3 showers)
- Private entrance to first floor
- 3 Air-conditioners
- Separate private office
- Storeroom
- Ample parking

Features

Zoning Commercial

Interior
 Power 3 Phase Yes

Sizes
 Floor Size 241m²
 Land Size 3,900m²

Extras
 Air Conditioner

