



Jessica Liebenberg
0732360712
jessica.liebenberg@seeff.com

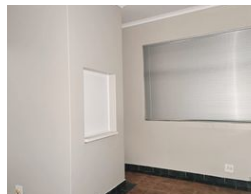
Contact Richards Bay
035 7890490

Lira Link Rd, Unit 2 Montego Park, Richards Bay Central, Richards Bay, 3900

20m² Office For Sale in Richards Bay Central



Web Ref CLS2869



R430,000

Monthly Levy R305 Excl. VAT

Monthly Rates R505 Excl. VAT



Prime commercial property for sale in Richards Bay Central

This prime property is located in the heart of Richards Bay's central business center at Partridge Place. Offering a fantastic opportunity for investors or business owners looking for a strategic location, this 20-square-meter unit is now available for sale.

With its convenient positioning, this property ensures easy access to various amenities, including shops, restaurants, banks, and professional services. It is ideally situated to attract a high volume of foot traffic, making it an ideal investment for retail or service-based businesses.

The unit itself boasts 20 square units of well-appointed space, providing ample room for display, storage, or office requirements. The interior is bright and modern, offering a versatile layout that can be easily customized to suit your business needs.

Features

Zoning Commercial

Sizes

Floor Size 20m²
Land Size 3,602m²