

Seeff



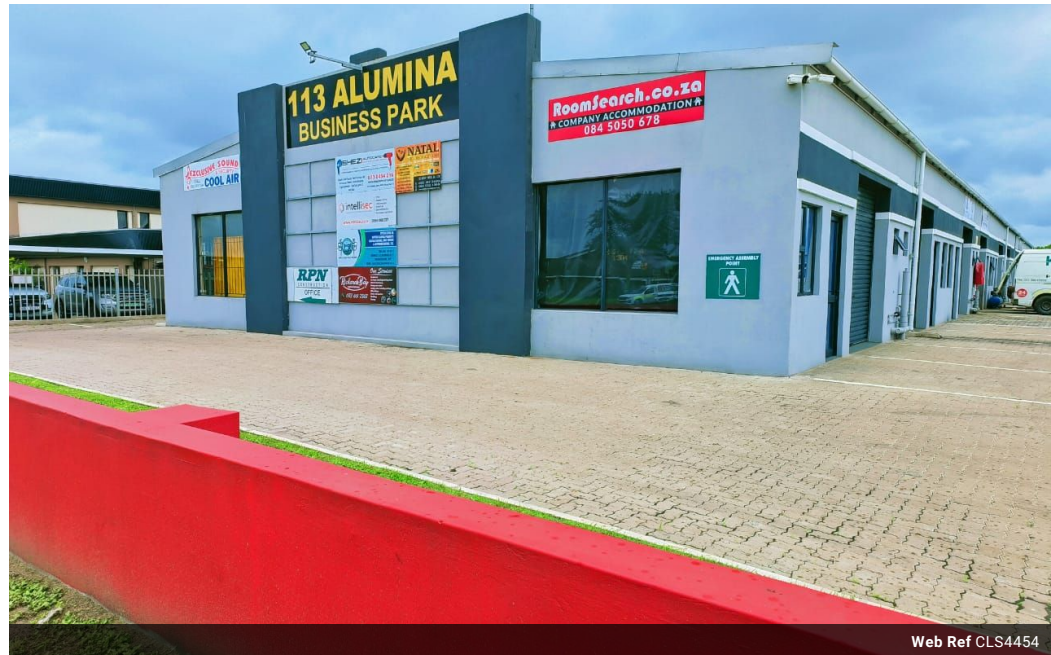
Melissa Struwig
083 859 6029
melissa.struwig@seeff.com

Contact Richards Bay

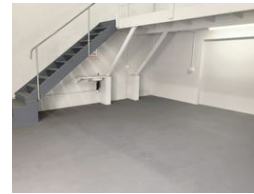
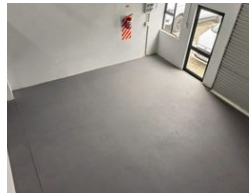
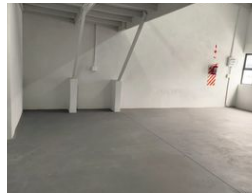
035 7890490

Lira Link Rd, Unit 2 Montego Park, Richards
Bay Central, Richards Bay, 3900

67m² Mini Factory To Let in Alton



Web Ref CLS4454



R6,995 per m²

Gross Monthly Rental R6,995 Excl. VAT
Monthly Rates R800 Excl. VAT

Monthly Levy R800 Excl. VAT

0 0

Calling all commercial property and business enthusiasts!

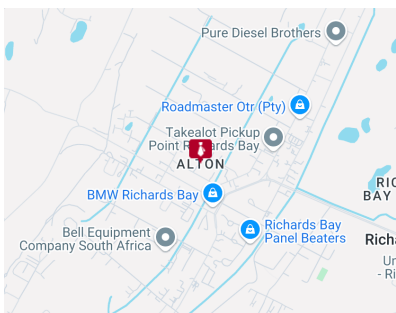
This property is strategically situated in the business hub of Alton. This unit has 117 square meters of usable floor area. As an added bonus, the unit has been dry-walled to create an office.

Features

Zoning Commercial

Sizes

Floor Size 67m²
Land Size 6,224m²



<https://richardsbay.seeff.com>