

Seeff



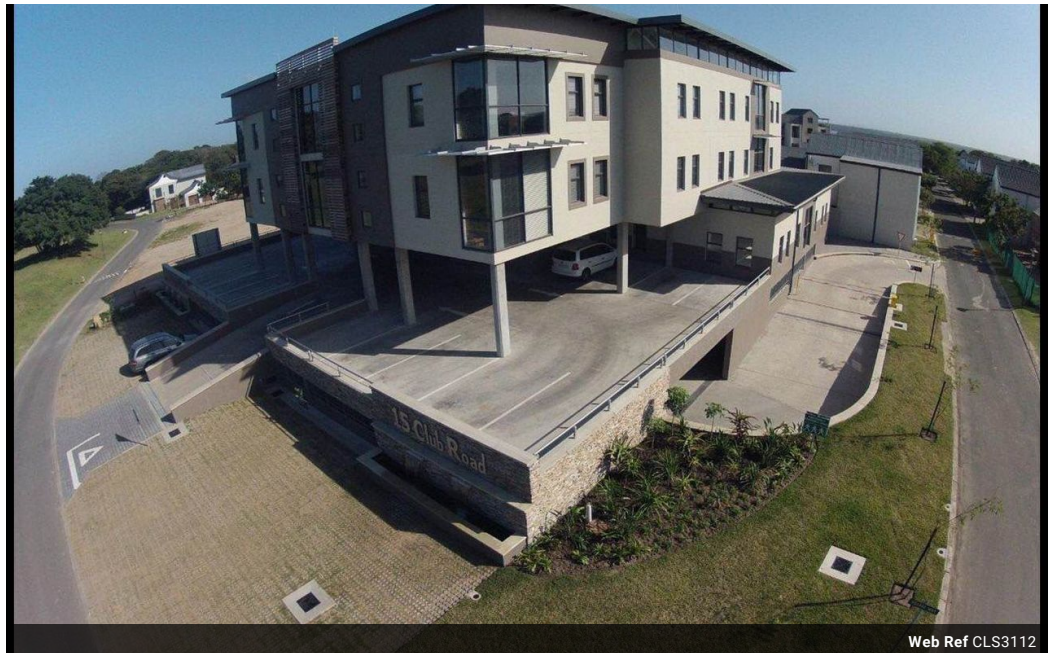
Melissa Struwig
083 859 6029
melissa.struwig@seeff.com

Contact Richards Bay

035 7890490

Lira Link Rd, Unit 2 Montego Park, Richards Bay Central, Richards Bay, 3900

94m² Office To Let in Meer En See



Web Ref CLS3112



R17,900 per m²

Gross Monthly Rental R17,900 Excl. VAT

0 0

Luxurious and secure office space on the Mzingazi Golf Estate

94m² unfurnished office unit consisting of the following.

- 1 x Reception
- 1 x Kitchenette
- 1 x Boardroom
- 4 x Offices
- 1 x Store area.
- 2 x Basement parking bays.

The Mzingazi Office Park has a generator that gives unlimited access to electricity during normal business hours of 07h00 to 18h00 when load shedding or a power outage occurs.

Features

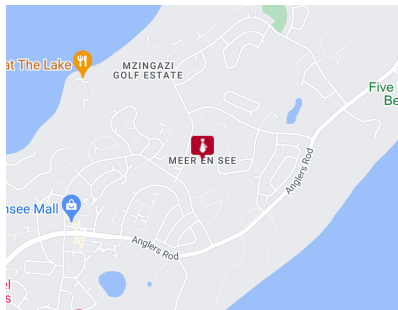
Zoning Commercial

Sizes

Floor Size 94m²
Land Size 2,169m²

Extras

Guard Security Gate Security Estate



<https://richardsbay.seeff.com>