



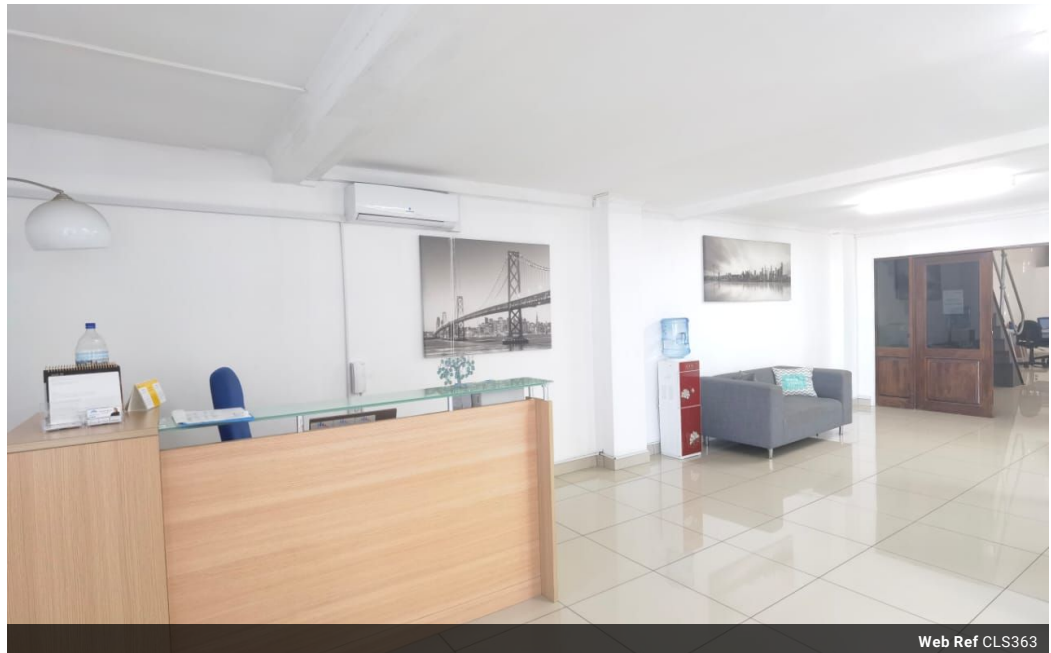
Cameron Moodley
 060 305 4162
 cameron.moodley@seeff.com

Contact Richards Bay

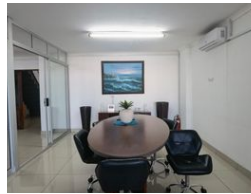
035 7890490

Lira Link Rd, Unit 2 Montego Park, Richards Bay Central, Richards Bay, 3900

546m² Building To Let in Richards Bay Central



Web Ref CLS363



R40 per m²

Gross Monthly Rental R22,000 Excl. VAT

0 0

Prime Located commercial listing available.

This beautifully renovated unit is move-in ready for your business on the main road your business will have maximum exposure and is easily accessible for walk-in clients,

Features

Zoning Commercial

Sizes

Floor Size 546m²
 Land Size 6,783m²

Extras

Air Conditioner

