

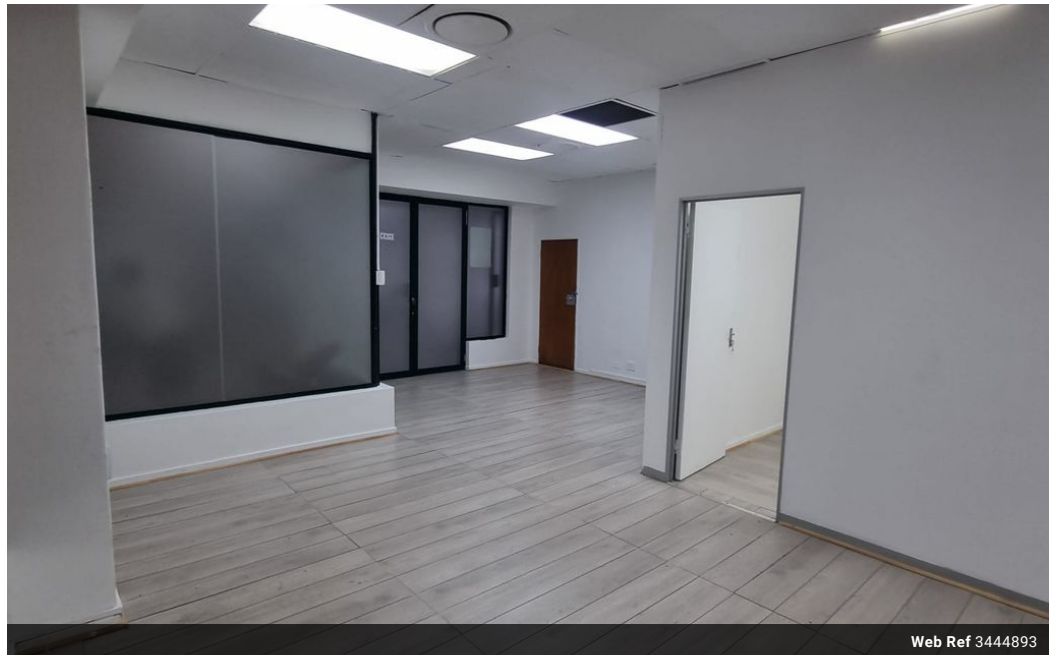


Melissa Struwig
083 859 6029
melissa.struwig@seeff.com

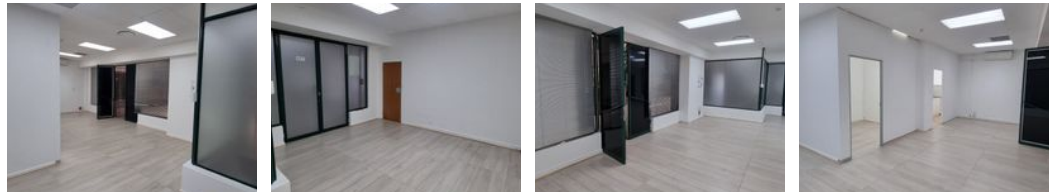
Contact Richards Bay

035 7890490

Lira Link Rd, Unit 2 Montego Park, Richards Bay Central, Richards Bay, 3900



Web Ref 3444893



R288 per m²

Gross Monthly Rental R17,250 Excl. VAT

0 0

Commercial space to rent in Richards Bay CBD

The commercial space refers to the overall space designed for business activities.

Reception area
Office
Kitchenette
Toilet
Operating cost R1610 incl
Electricity R2875 incl upfront

Features

Zoning Commercial

Sizes

Floor Size 60m²
Land Size 3,614m²