



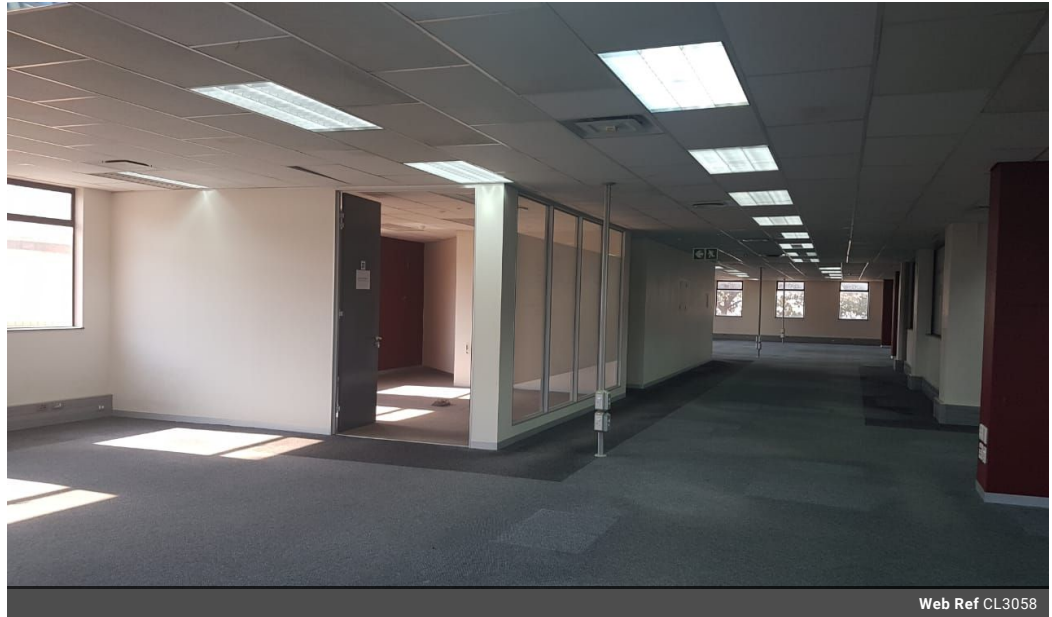
Cameron Moodley
 060 305 4162
 cameron.moodley@seeff.com

Contact Richards Bay

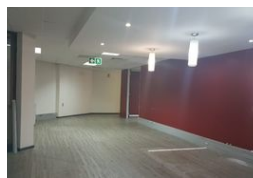
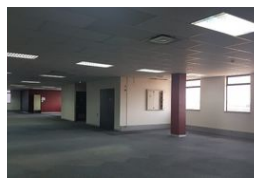
035 7890490

Lira Link Rd, Unit 2 Montego Park, Richards Bay Central, Richards Bay, 3900

2,221m² Office To Let in Richards Bay Central



Web Ref CL3058



R65 per m²

Gross Monthly Rental R65 Excl. VAT

0 0

Commercial Property Available in CBD.

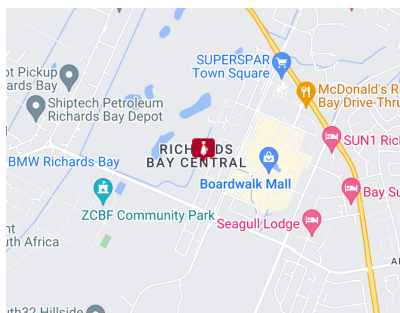
- 4 x entrance doors
- 3 sets x male and female bathrooms
- 4 x kitchens
- Large training room
- 1 x large boardroom with catering corner
- 2 x meeting rooms
- 4 x small board rooms
- 2 x medium size boardrooms

Features

Zoning Commercial

Sizes

Floor Size 2,221m²
 Land Size 2,221m²



<https://richardsbay.seeff.com>