



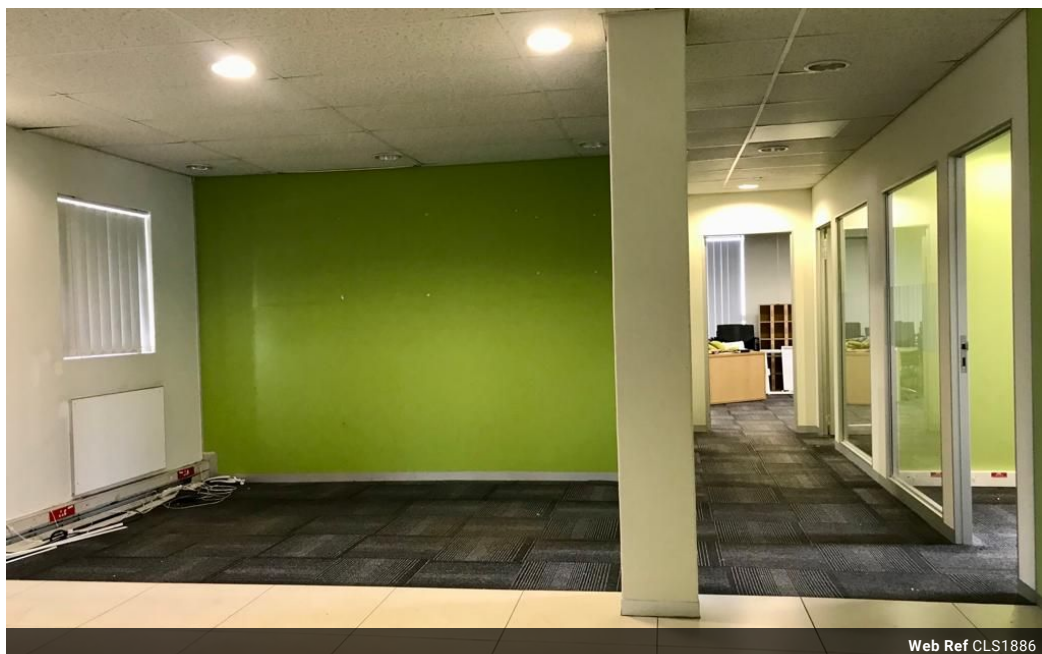
Sheryl Pillay
063 567 1657
sheryl.pillay@seeff.com

Contact Richards Bay

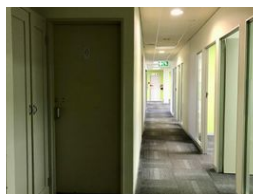
035 7890490

Lira Link Rd, Unit 2 Montego Park, Richards Bay Central, Richards Bay, 3900

350m² Office To Let in Richards Bay Central



Web Ref CLS1886



POA

0 0

350m² Office To Let in Richards Bay Central

This A Grade building is located in the sought-after financial district of the CBD in Richards Bay. It is surrounded by the best amenities including schools, shops, banks, hospitals, and restaurants for those quick daily client meetings.

There is also exceptional security and the building is surrounded by easy access to transport.

This premium 350 square meters commercial property offers 11 office units, meeting rooms, an open plan boardroom, and a reception area. The office space is located on the second floor of the building and includes communal male and female bathrooms as well as a kitchenette.

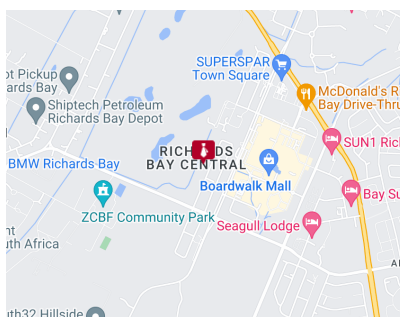
Our team of property professionals is ready to find you the perfect space. This is the perfect fit for a medical or legal practice. It

Features

Zoning Commercial

Sizes

Floor Size 350m²
Land Size 1,667m²



<https://richardsbay.seeff.com>