

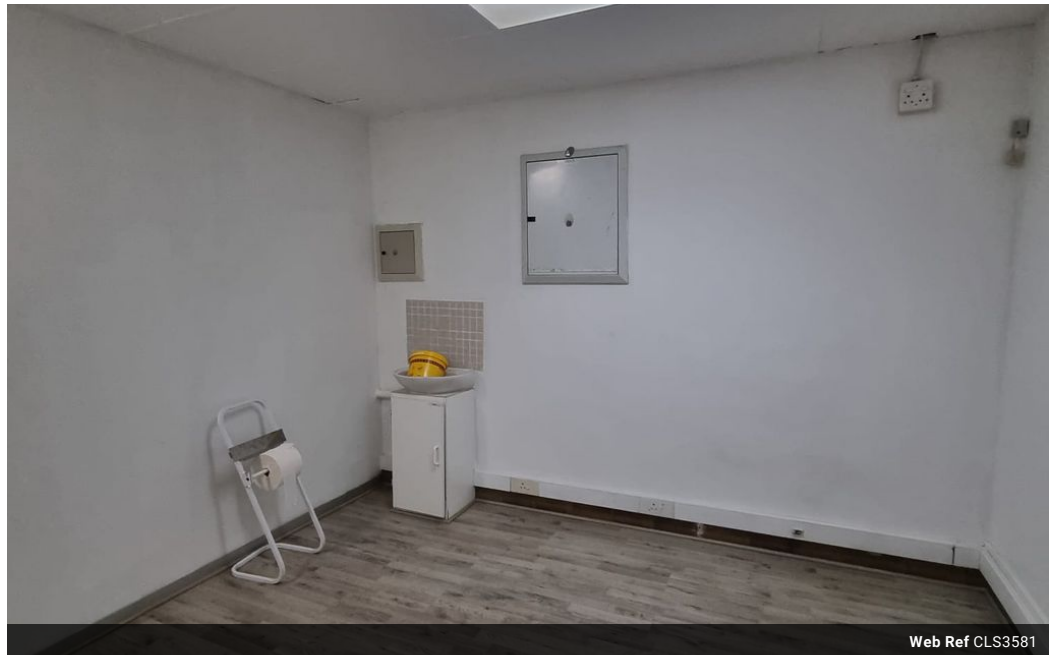


Melissa Struwig
083 859 6029
melissa.struwig@seeff.com

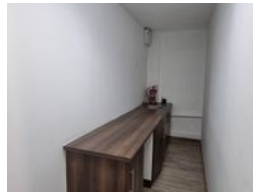
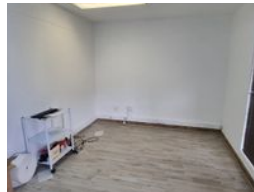
Contact Richards Bay

035 7890490

Lira Link Rd, Unit 2 Montego Park, Richards Bay Central, Richards Bay, 3900



Web Ref CLS3581



R296 per m²

Gross Monthly Rental R10,350 Excl. VAT

0 0

Commercial space to rent in Richards Bay CBD

The Commercial space refers to the overall space designated for business activities.

Reception
Office space
Kitchenette
Operation Cost R1380 incl

Features

Zoning Commercial

Sizes

Floor Size 36m²
Land Size 3,875m²