



**Mycle-Lee Beaumont**  
060 476 1867  
mycle-lee.beaumont@seeff.com

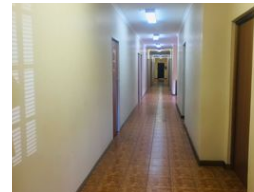
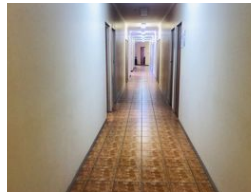
Contact Richards Bay

035 7890490

Lira Link Rd, Unit 2 Montego Park, Richards Bay Central, Richards Bay, 3900



Web Ref CLS4051



R4,598 per m<sup>2</sup>

Gross Monthly Rental R4,598 Excl. VAT

0 0

### Office For rent in Richards Bay's Hub!

Discover the perfect space for your small business or office branch in this secure, centrally-located building.

**Features:**

- choose between 6 private offices for focused productivity
- 2 fully-equipped kitchens for convenience
- 2 modern toilets for comfort
- Prime location in Richards Bay's central business district

### Features

**Zoning** Commercial

**Sizes**

Floor Size 11m<sup>2</sup>  
Land Size 1,922m<sup>2</sup>