

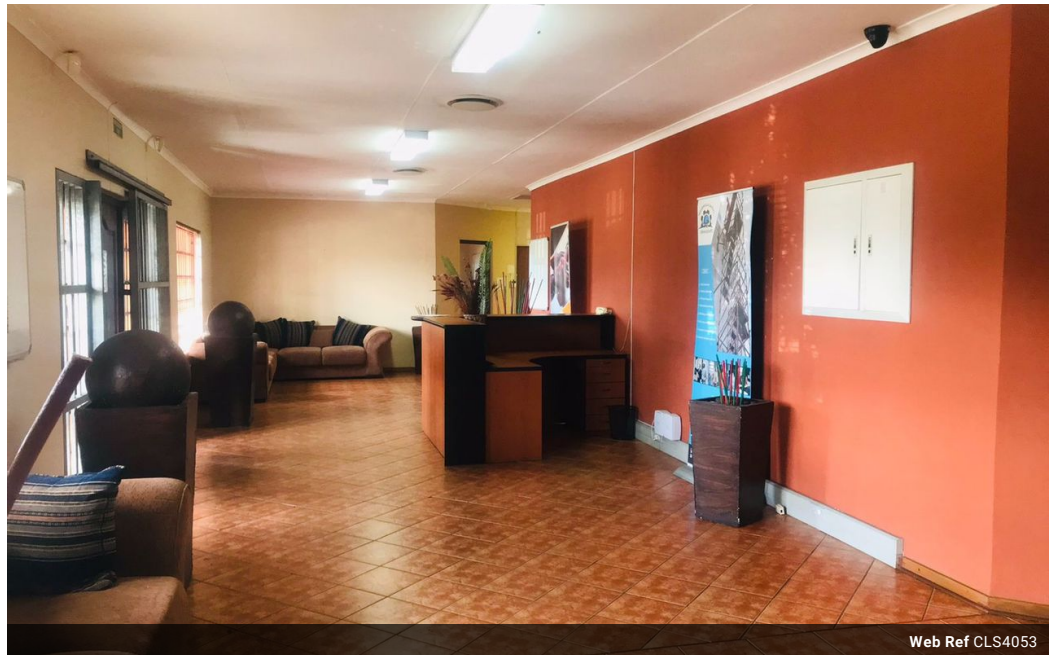


**Mycle-Lee Beaumont**  
060 476 1867  
mycle-lee.beaumont@seeff.com

Contact Richards Bay

035 7890490

Lira Link Rd, Unit 2 Montego Park, Richards Bay Central, Richards Bay, 3900



Web Ref CLS4053



R14,000 per m<sup>2</sup>

Gross Monthly Rental R14,000 Excl. VAT

0 0

Train, Inspire, Grow in Richards Bay's Premier Venue!

Unleash your training potential in this spacious, secure venue, perfectly suited for:

- Corporate training
- Workshops
- Seminars
- Conferences

Features:

- Large, open-plan space for flexibility
- 2 fully-equipped kitchens for catering ease
- 2 modern toilets for comfort
- Prime location in Richards Bay's central business district

### Features

**Zoning** Commercial

**Sizes**

Floor Size	7,675m <sup>2</sup>
Land Size	7,675m <sup>2</sup>