



**Melissa Struwig**  
 083 859 6029  
 melissa.struwig@seeff.com

Contact Richards Bay

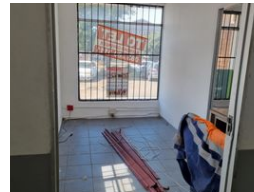
035 7890490

Lira Link Rd, Unit 2 Montego Park, Richards Bay Central, Richards Bay, 3900

250m<sup>2</sup> Workshop To Let in Richards Bay Central



Web Ref CLS2940



R18,500 per m<sup>2</sup>

Gross Monthly Rental R18,500 Excl. VAT

0 0

### Workshop to rent

This workshop offers businesses a premium space to thrive in a strategic location. Spanning an impressive gross lettable area of 250 sqm.

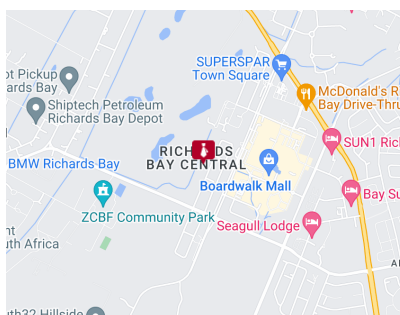
This space also offers two small offices, a kitchen, and a bathroom.

### Features

**Zoning** Commercial

**Sizes**

Floor Size 250m<sup>2</sup>  
 Land Size 1,920m<sup>2</sup>



<https://richardsbay.seeff.com>