



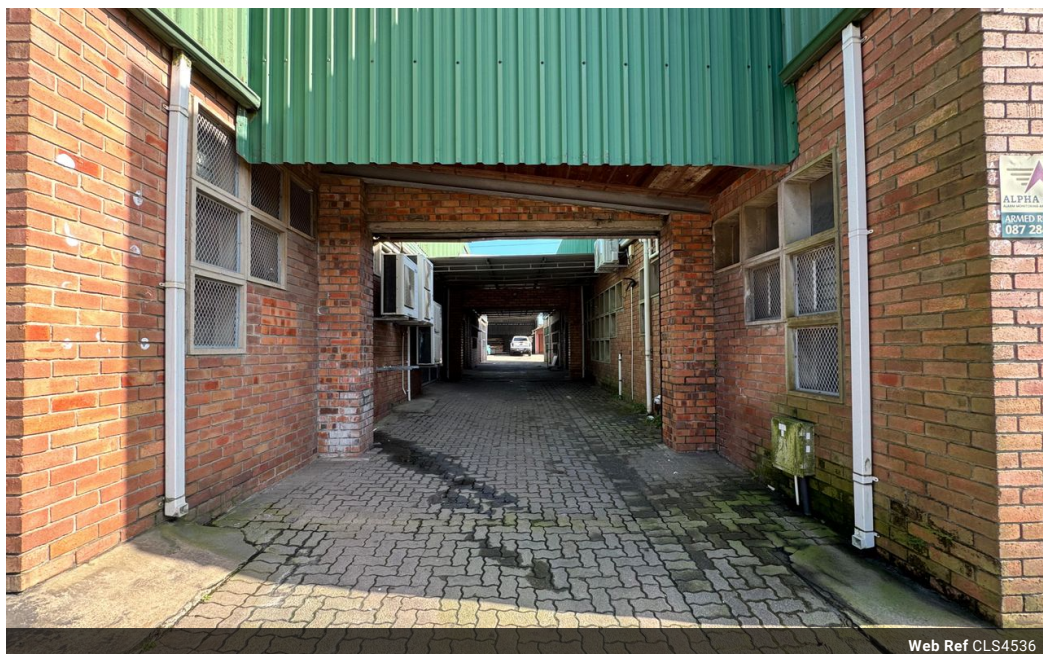
Kevin McKune
083 877 5224
kevin.mckune@seeff.com

Contact Richards Bay

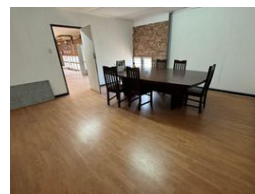
035 7890490

Lira Link Rd, Unit 2 Montego Park, Richards Bay Central, Richards Bay, 3900

750m² Workshop For Sale in Richards Bay Central



Web Ref CLS4536



R5,500,000

Monthly Rates R12,000 Excl. VAT



Industrial Zoned Building In Prime Position

Features Include:

Multiple air-conditioned offices & admin floor space on 2 levels

750m² Building under-roof

2 x DB's (building can be divided and sub-let as a future option)

3 - phase power

3 x high roller doors to factory/work area

2 storage sheds

Kitchenette & ablutions for offices & work area

Features

Zoning Industrial

Sizes

Floor Size 750m²