

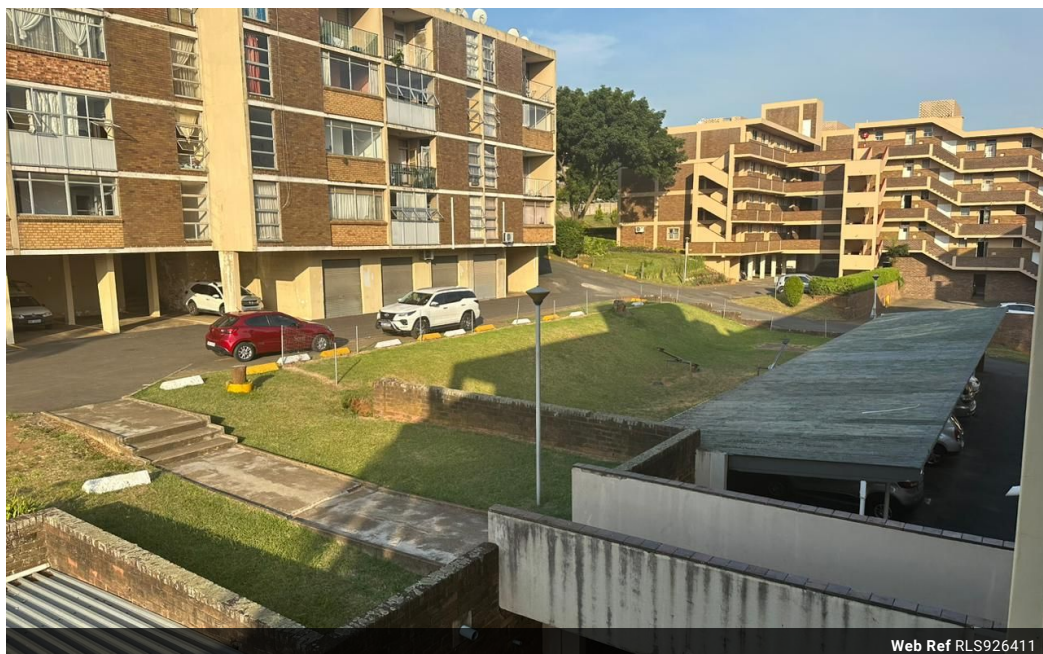


Sebenzile Mthethwa
063 579 6915
sebe.mthethwa@seeff.com

Contact Richards Bay

035 7890490

Lira Link Rd, Unit 2 Montego Park, Richards Bay Central, Richards Bay, 3900



Web Ref RLS926411



R450,000

🛏 1 🚿 1

Monthly Bond Repayment R4,644.85
Calculated over 20 years at 11% with no deposit.

Transfer Costs R17,928.00 **Bond Costs** R12,935.00
These calculations are only a guide. Please ask your conveyancer for exact calculations.

Monthly Levy R700 **Monthly Rates** R500

Perfect starter/investment home

This bachelor flat is within walking distance of town and is situated in a safe and secure complex.

It offers a fully fitted kitchen, a spacious bedroom, and a neat bathroom.

Contact me today for a viewing.

Features

Interior		Exterior		Sizes	
Bedrooms	1	Carports / Parkings	1	Floor Size	45m ²
Bathrooms	1	Security	No	Land Size	5,176m ²
Kitchens	1	Pool	No		
Furnished	No	Views	False		

Extras
Electric Gate Burglar Bars

