



Sebenzile Mthethwa
063 579 6915
sebe.mthethwa@seeff.com

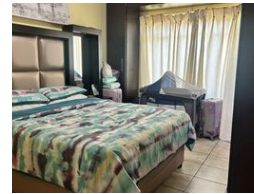
Contact Richards Bay

035 7890490

Lira Link Rd, Unit 2 Montego Park, Richards Bay Central, Richards Bay, 3900



Web Ref RLS938860



R690,000

2 1

Monthly Bond Repayment R7,122.10
Calculated over 20 years at 11% with no deposit.

Transfer Costs R23,730.00 **Bond Costs** R17,680.00

These calculations are only a guide. Please ask your conveyancer for exact calculations.

Monthly Levy R900 **Monthly Rates** R600

2 Bedroom unit perfectly located

This neat unit offers you two spacious bedrooms, one bathroom, a lounge, and a fully fitted kitchen.

The unit comes with a lock-up garage.

The property is situated close to schools and town.

This is a perfect and affordable apartment to buy for a first-time buyer. Do not miss this opportunity in making this unit yours.

Call me today for your viewing appointment

Home is our story

Features

Interior

Bedrooms	2
Bathrooms	1
Kitchens	1
Recep. Rooms	1
Furnished	No

Exterior

Security	No
Pool	No
Views	False

Sizes

Floor Size	74m ²
Land Size	10,026m ²

Extras

Electric Gate