



**Sebenzile Mthethwa**  
063 579 6915  
sebe.mthethwa@seeff.com

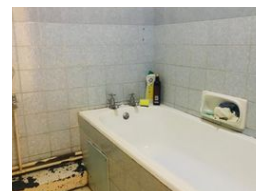
Contact Richards Bay

035 7890490

Lira Link Rd, Unit 2 Montego Park, Richards Bay Central, Richards Bay, 3900



Web Ref RLS945984



R380,000

**Monthly Bond Repayment** R3,922.32  
Calculated over 20 years at 11% with no deposit.

**Transfer Costs** R16,806.00    **Bond Costs** R11,960.00

These calculations are only a guide. Please ask your conveyancer for exact calculations.

**Monthly Levy** R700    **Monthly Rates** R550



Perfect starter/investment home

This bachelor flat is within walking distance of town and is situated in a safe and secure complex.

It offers a fully fitted kitchen, a spacious bedroom, and a neat bathroom. Perfect for a first-time buyer or someone looking for an investment property and something affordable.

Contact me today for your viewing appointment.  
Home is our story

Features

Interior		Exterior		Sizes	
Bedrooms	1	Garages	1	Floor Size	45m <sup>2</sup>
Bathrooms	1	Carports / Parkings	1	Land Size	5,176m <sup>2</sup>
Kitchens	1	Security	No		
Recep. Rooms	1	Pool	No		
Furnished	No	Views	False		

