



Sebenzile Mthethwa
063 579 6915
sebe.mthethwa@seeff.com

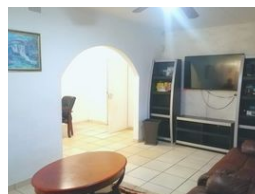
Contact Richards Bay

035 7890490

Lira Link Rd, Unit 2 Montego Park, Richards Bay Central, Richards Bay, 3900



Web Ref RLS885854



R1,600,000

🛏️ 4 🚿 2 🏠 2

Monthly Bond Repayment R16,515.01
Calculated over 20 years at 11% with no deposit.

Transfer Costs R48,785.00 **Bond Costs** R28,990.00
These calculations are only a guide. Please ask your conveyancer for exact calculations.

Monthly Rates R1,300

Large family home in Empangeni

Looking for a beautiful home with a large yard and sparkling pool in the hot weather of KZN then look no further, Empangeni is a very popular area to live in, twenty-five minutes away from Richardsbay, all the rooms are spacious and the main bedroom has it's own en-suite, large tv room, dining room, fully fitted kitchen, guest bathroom, double garage and even boast with its own separate granny flat, that could also be used for your private office space.

Fully walled with an electric fence & automated gate, this is a must-view!

Close enough to all amenities

Call me today to view this property

Features

Pets Allowed Yes

Interior

Bedrooms	4
Bathrooms	2
Kitchens	1
Recep. Rooms	2
Furnished	No

Exterior

Garages	2
Security	Yes
Pool	Yes
Views	False

Sizes

Land Size	1,406m ²
-----------	---------------------

Extras

Garden Electric Gate Burglar Bars Linen Room Electric Fencing Eye Level Oven Security Gate Air Conditioner Patio Satellite Dish