



Terrence Pillay
078 135 6679
terrence.p@seeff.com

Contact Richards Bay

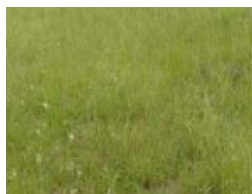
035 7890490

Lira Link Rd, Unit 2 Montego Park, Richards
Bay Central, Richards Bay, 3900

963m² Vacant Land For Sale in Felixton



Web Ref RLS884542



R500,000

Monthly Bond Repayment R4,991.90

Calculated over 20 years at 10.5% with no deposit.

Transfer Costs R19,105.00 **Bond Costs** R13,910.00

These calculations are only a guide. Please ask your conveyancer for exact calculations.

Prime piece of land

This residential vacant land is set in the secure leafy village of Felixton. The village is surrounded by an electric fence and has two 24 hour security access points.

Its located only 8 kilometers South of Empangeni on the Kwa-Zulu Natal North Coast. The village boasts a par 3 golf course with country club facilities, walking, running, and cycling routes as well.

This prime piece of land offers great size and location for those that are looking for the perfect land to build that dream home.

Call me today to view!

Features