

Seeff



Sebenzile Mthethwa
063 579 6915
sebe.mthethwa@seeff.com

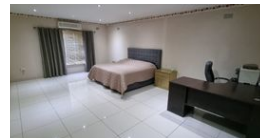
Contact Richards Bay

035 7890490

Lira Link Rd, Unit 2 Montego Park, Richards Bay Central, Richards Bay, 3900



Web Ref RLS936922



R2,350,000

3 2 2

Monthly Bond Repayment R24,256.43
Calculated over 20 years at 11% with no deposit.

Transfer Costs R101,552.00 **Bond Costs** R36,530.00
These calculations are only a guide. Please ask your conveyancer for exact calculations.

Monthly Rates R1,500

Exquisite, Contemporary and modern 3 bedroom 2 bathrooms house in Grantham park

This home offers a prime location that is highly desirable. It is well-appointed and provides an affordable option for potential buyers.

The house features a lovely open-plan lounge spacious with aircon, a dining area, and a beautiful kitchen with Caesar stone countertops, creating a spacious and inviting atmosphere.

The main bedroom is spacious with a large walk-in dressing area and a full ensuite with his and her basin. The kid's bedrooms are spacious plenty of cupboard space with air conditioning.

It has a beautiful entertainment area to host family and friends with a beautiful sparkling pool and heated jacuzzi.

When entering the main gate, you will be welcomed by a large beautiful garden leading to the automated double garage.

Serious buyers only
contact me today to view the property

Features

Pets Allowed Yes

Interior

Bedrooms	3
Bathrooms	2
Kitchens	1
Recep. Rooms	2
Studies	1
Furnished	No

Exterior

Garages	2
Security	No
Pool	Yes
Views	False

Sizes

Floor Size	929m ²
Land Size	2,288m ²

Extras

Electric Gate Electric Garage Totally Walled Air Conditioner Jacuzzi Alarm System Burglar Bars
Electric Fencing Granite Tops Breakfast Nook Extractor Fan Dishwasher Connection Washing
Machine Connection Walk In Closet