

Seeff



Sebenzile Mthethwa
063 579 6915
sebe.mthethwa@seeff.com

Contact Richards Bay

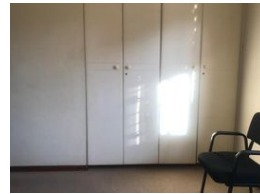
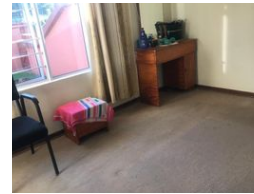
035 7890490

Lira Link Rd, Unit 2 Montego Park, Richards Bay Central, Richards Bay, 3900

3 Bedroom Simplex For Sale in Grantham Park



Web Ref RLS934583



R915,000

🛏 3 🚿 1 🏠 1

Monthly Bond Repayment R9,289.34

Calculated over 20 years at 10.75% with no deposit.

Transfer Costs R30,412.00 **Bond Costs** R23,335.00

These calculations are only a guide. Please ask your conveyancer for exact calculations.

Monthly Rates R1,000

Beautiful and spacious Simplex apartment for sale

Lovely Simplex apartment for sale in Grantham Park.

This simplex offers an open plan kitchen, and spacious lounge, a main bedroom with built-in cupboards and aircon, bedrooms 2 and 3 with built-in cupboards, a family bathroom, a single lock-up garage, and a nice and spacious garden for you to enjoy with your friends and family.

This property is located in the popular part of Grantham Park and is safe and secure.

The property is close to schools and many other amenities.

Don't wait too long, make the right decision and call today for your viewing appointment!

Features

Pets Allowed Yes

Interior

Bedrooms	3
Bathrooms	1
Kitchens	1
Recep. Rooms	1
Furnished	No

Exterior

Garages	1
Security	No
Pool	No
Views	False

Sizes

Floor Size	85m ²
Land Size	3,317m ²

Extras

Electric Gate Totally Walled Air Conditioner



<https://richardsbay.seeff.com>