

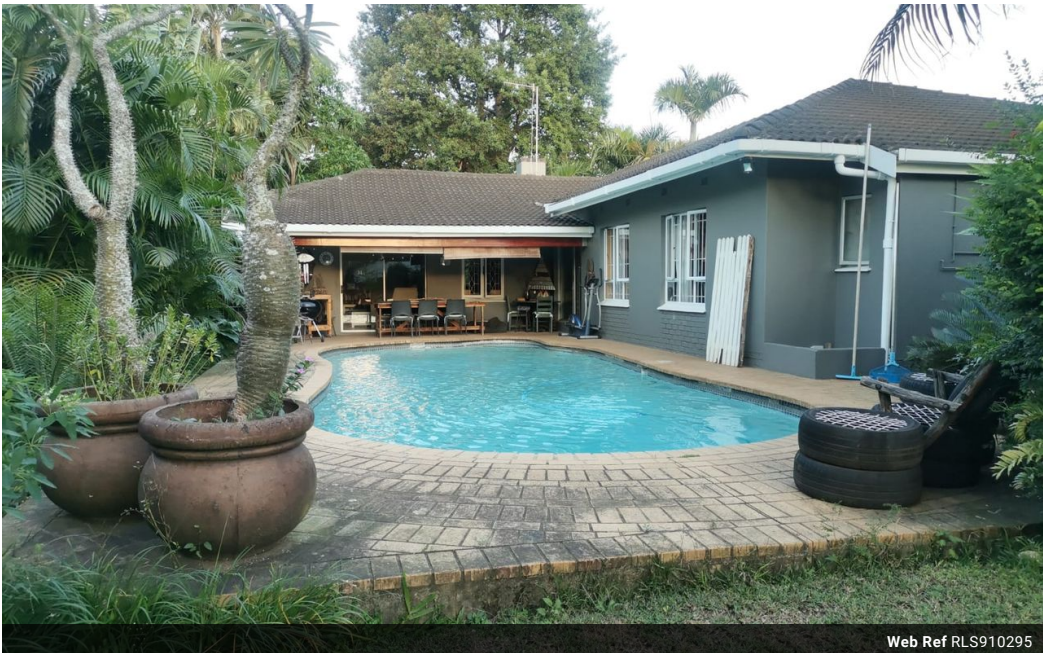


Sebenzile Mthethwa  
063 579 6915  
sebe.mthethwa@seeff.com

Contact Richards Bay  
035 7890490

Lira Link Rd, Unit 2 Montego Park, Richards Bay Central, Richards Bay, 3900

4 Bedroom Guest House For Sale in Kildare



Web Ref RLS910295



R1,950,000

4 3 3

**Monthly Bond Repayment** R19,468.41  
Calculated over 20 years at 10.5% with no deposit.  
**Transfer Costs** R72,308.00 **Bond Costs** R32,760.00  
These calculations are only a guide. Please ask your conveyancer for exact calculations.  
**Monthly Rates** R1,500

What a charmer

This property is spacious and offers ample space for a large family.

Features 4 bedrooms, the main bedroom with an en-suite and plenty of cupboard space, 3 lounges, a dining area, patio, and entertainment area that opens to the sparkling pool, and 3 garages of which 1 garage is a drive-through that leads to 2 parking spaces for a person with many cars.

This property is situated in a good area and must be viewed to be appreciated.

Features

| Pets Allowed |    | Yes |  |                     |         |
|--------------|----|-----|--|---------------------|---------|
| Interior     |    |     |  | Exterior            |         |
| Bedrooms     | 4  |     |  | Garages             | 3       |
| Bathrooms    | 3  |     |  | Carports / Parkings | 2       |
| Kitchens     | 1  |     |  | Security            | No      |
| Recep. Rooms | 5  |     |  | Pool                | Yes     |
| Studies      | 1  |     |  | Views               | False   |
| Furnished    | No |     |  |                     |         |
|              |    |     |  | Sizes               |         |
|              |    |     |  | Land Size           | 1,206m² |

Extras

Garden Totally Walled Granite Tops Eye Level Oven Dishwasher Connection Washing Machine Connection Entrance Hall Scullery

