

**Seeff**



**Dillon Cockrell**  
0603205505  
dillon.cockrell@seeff.com

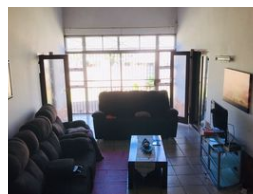
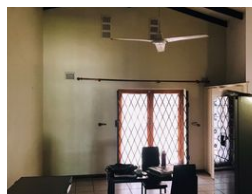
Contact Richards Bay

035 7890490

Lira Link Rd, Unit 2 Montego Park, Richards Bay Central, Richards Bay, 3900



Web Ref RLS970335



R1,570,000

4 2

**Monthly Bond Repayment** R16,205.36  
Calculated over 20 years at 11% with no deposit.

**Transfer Costs** R47,885.00 **Bond Costs** R28,990.00  
These calculations are only a guide. Please ask your conveyancer for exact calculations.

**Monthly Rates** R1,100

### Spacious 4-Bedroom Home with Study, Flatlet, and Dual Carports

Welcome to this spacious 4-bedroom home, perfect for families and those seeking additional space. The property features a dedicated study, ideal for remote work or personal projects, providing a quiet retreat for productivity.

With two carports, you'll have plenty of parking and easy access to your vehicles. The generous layout offers a comfortable living environment, while the versatile flatlet can serve as a guest suite, home office, or rental opportunity, adding great value to the property.

Enjoy ample natural light throughout, and make the most of your outdoor space. This well-appointed home is designed for modern living and is ready for you to move in and make it your own!

### Features

**Pets Allowed** Yes

#### Interior

Bedrooms	4
Bathrooms	2
Kitchens	1
Recep. Rooms	2
Studies	1
Furnished	No

#### Exterior

Carports / Parkings	4
Security	No
Pool	No
Views	False

#### Sizes

Land Size	1,103m <sup>2</sup>
-----------	---------------------

#### Extras

Totally Walled Air Conditioner Stove Laundry Storeroom