

# Seeff



**Sebenzile Mthethwa**  
063 579 6915  
sebe.mthethwa@seeff.com

Contact Richards Bay

035 7890490

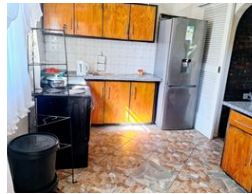
Lira Link Rd, Unit 2 Montego Park, Richards Bay Central, Richards Bay, 3900

3 Bedroom House For Sale in Kildare



SOLE MANDATE

Web Ref RLS982269



R1,170,000

3 2 1

**Monthly Bond Repayment** R11,878.18

Calculated over 20 years at 10.75% with no deposit.

**Transfer Costs** R32,749.00 **Bond Costs** R25,220.00

These calculations are only a guide. Please ask your conveyancer for exact calculations.

**Monthly Rates** R1,500

Exclusive Mandate - Diamond in the rough

Exclusive Mandate - This 3-bedroom and 2 bathroom house with a single garage offers you endless potential.

Features include a swimming pool awaiting renovation. The property foundation is set for a double-storey expansion with the groundwork already in place. This house is perfect for investors or DIY enthusiasts looking to add their personal touch and increase value. The kitchen needs TLC and offers a chance to add your own personal touch.

Situated in a desirable location close to top schools and many other amenities.

## Features

### Interior

Bedrooms	3
Bathrooms	2
Kitchens	1
Recep. Rooms	2
Furnished	No

### Extras

Totally Walled

### Exterior

Garages	1
Security	No
Pool	No
Views	False

### Sizes

Land Size	1,183m²
-----------	---------

<https://richardsbay.seeff.com>