

Seeff



Sebenzile Mthethwa
063 579 6915
sebe.mthethwa@seeff.com

Contact Richards Bay

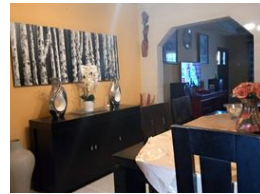
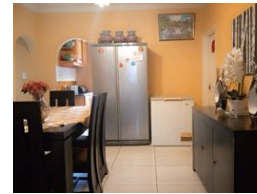
035 7890490

Lira Link Rd, Unit 2 Montego Park, Richards Bay Central, Richards Bay, 3900

3 Bedroom House For Sale in Ngwelezana



Web Ref RLS910544



R995,000

3 3 1

Monthly Bond Repayment R9,767.35

Calculated over 20 years at 10.25% with no deposit.

Transfer Costs R30,502.00 **Bond Costs** R23,335.00

These calculations are only a guide. Please ask your conveyancer for exact calculations.

Monthly Rates R900

Beautiful family home

This property is big enough for a large family.

The main house offers 3 bedrooms, 3 bathrooms of which one is en-suite, a spacious lounge and dining area, as well as a fitted kitchen.

It also has a 3 bedroom outbuilding with an en-suite and it is situated close to the main road.

Features

Pets Allowed Yes

Interior

Bedrooms	3
Bathrooms	3
Kitchens	1
Recep. Rooms	2
Furnished	No

Exterior

Garages	1
Carports / Parkings	2
Security	No
Pool	No
Views	False

Sizes

Land Size	376m²
-----------	-------

Extras

Garden Burglar Bars Granite Tops Eye Level Oven Extractor Fan

<https://richardsbay.seeff.com>