



Sebenzile Mthethwa
063 579 6915
sebe.mthethwa@seeff.com

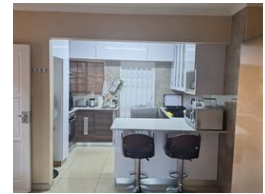
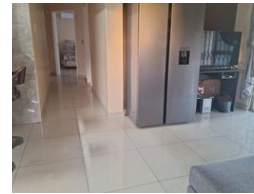
Contact Richards Bay

035 7890490

Lira Link Rd, Unit 2 Montego Park, Richards Bay Central, Richards Bay, 3900



Web Ref RLS957004



R1,260,000

3
 1
 1

Monthly Bond Repayment R13,005.57
Calculated over 20 years at 11% with no deposit.

Transfer Costs R36,417.00 **Bond Costs** R27,105.00

These calculations are only a guide. Please ask your conveyancer for exact calculations.

Monthly Rates R1,100

Well priced townhouse

This is a very neat townhouse located in Empangeni Inyala Park. This home is low maintenance as it is face brick.

This home boasts a fully fitted kitchen with granite tops and a fitted stove giving you that modern look, three bedrooms, one bathroom, and a spacious open-plan lounge area with sliding doors leading you out to the spacious yard.

This property is perfect for a big or small family looking for something neat, affordable, and cozy.

Contact me today for your viewing appointment!

Features

Interior		Exterior		Sizes	
Bedrooms	3	Garages	1	Floor Size	108m ²
Bathrooms	1	Security	No	Land Size	450m ²
Kitchens	1	Pool	No		
Recep. Rooms	1	Views	False		
Furnished	No				

Extras

Electric Gate Totally Walled Air Conditioner Alarm System Security Gate Burglar Bars Electric Fencing Granite Tops Stove