

Seeff

6 Bedroom House For Sale in Panorama



Thobile Nxumalo
0605548653
thobile.nxumalo@seeff.co.za

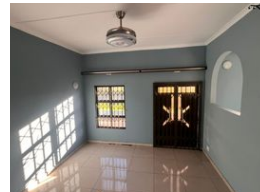
Contact Richards Bay

035 7890490

Lira Link Rd, Unit 2 Montego Park, Richards
Bay Central, Richards Bay, 3900



Web Ref RLS982708



R1,699,000

Monthly Bond Repayment R17,248.74

Calculated over 20 years at 10.75% with no deposit.

Transfer Costs R54,979.00 **Bond Costs** R30,875.00

These calculations are only a guide. Please ask your conveyancer for exact calculations.

6 3 2

Spacious 6-Bedroom Home with Double Garage and Large Garden

This stunning 6-bedroom home boasts a classic layout, perfect for family living.

The interior features separate living and dining rooms, a spacious kitchen, and ample space throughout.

With all rooms on a single level, it's ideal for effortless navigation and comfortable living.

The expansive private garden provides a serene outdoor oasis, while the double garage and roomy driveway offer ample parking and storage.

A practical and versatile home with endless possibilities.

Features

Interior

Bedrooms	6
Bathrooms	3
Kitchens	1
Recep. Rooms	2
Furnished	No

Exterior

Garages	2
Security	No
Pool	No
Views	False

Sizes

Land Size	1,533m²
-----------	---------

Extras

Garden Patio Electric Garage Guest Toilet Shower, Toilet and Basin Bath, Toilet and Basin
Satellite Dish Burglar Bars Stove Washing Machine Connection