

Seeff



Sebenzile Mthethwa
063 579 6915
sebe.mthethwa@seeff.com

Contact Richards Bay

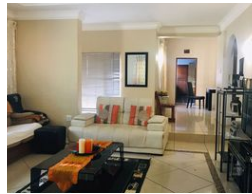
035 7890490

Lira Link Rd, Unit 2 Montego Park, Richards Bay Central, Richards Bay, 3900

5 Bedroom House For Sale in Panorama



Web Ref RLS889102



R2,340,000

🛏 5 🛁 4 🚗 2

Monthly Bond Repayment R23,756.36

Calculated over 20 years at 10.75% with no deposit.

Transfer Costs R100,752.00 **Bond Costs** R36,530.00

These calculations are only a guide. Please ask your conveyancer for exact calculations.

Monthly Rates R1,500

Spacious face brick home set in a quite street

This warm family home is inviting and allows for easy living with 2 lounges.

Five bedrooms providing lots of accommodation and a beautiful pool and braai area perfect for all occasions.

With the additional income from the 3 flatlets located on this property. consisting of one-bedroom kitchen and a shower

Call me today to view!

Features

Pets Allowed Yes

Interior

Bedrooms	5
Bathrooms	4
Kitchens	1
Recep. Rooms	3
Studies	1
Furnished	No

Exterior

Garages	2
Carports / Parkings	2
Security	Yes
Pool	Yes
Views	False

Sizes

Land Size	1,316m²
-----------	---------

Extras

Linen Room Breakfast Nook Eye Level Oven Extractor Fan Walk In Closet Alarm System
Outdoor Beams Air Conditioner Built In Braai Totally Walled Satellite Dish Garden Electric Gate
Electric Garage

<https://richardsbay.seeff.com>