

Seeff



Terrence Pillay
078 135 6679
terrence.p@seeff.com

Contact Richards Bay

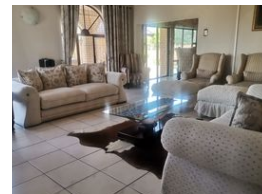
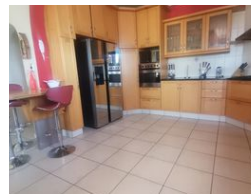
035 7890490

Lira Link Rd, Unit 2 Montego Park, Richards Bay Central, Richards Bay, 3900

8 Bedroom House For Sale in Richem



Web Ref RLS895102



R1,979,000

Monthly Bond Repayment R20,091.38

Calculated over 20 years at 10.75% with no deposit.

Transfer Costs R73,946.00 **Bond Costs** R32,760.00

These calculations are only a guide. Please ask your conveyancer for exact calculations.

🛏 8 🚿 3.5 🚗 2

Excellent Location - Modern & Absolute value for money!

Every once in a while a truly beautiful home in one of the most superb locations in Empangeni comes on the market. There is simply no other home quite like it, incorporating all the elements of spaciousness, a symphony of beautiful finishes throughout.

This attractive home has much to offer in particular the spacious bedrooms of which some feature air-conditioning and some en-suite, modern and fitted bathrooms, built-in braai area, covered entertainment area overlooking the pool, servants quarters, 7 lovely bedrooms, 3 fitted bathrooms, open plan living areas, and a modern fitted kitchen.

Contact me today to make a viewing arrangement.

Features

Pets Allowed Yes

Interior

Bedrooms	8
Bathrooms	3.5
Kitchens	1
Recep. Rooms	2
Studies	1
Furnished	No

Exterior

Garages	2
Carports / Parkings	1
Security	Yes
Dom. Accom.	1
Pool	Yes
Views	False

Sizes

Land Size	948m ²
-----------	-------------------

Extras

Garden Balcony Patio Electric Gate Electric Garage Totally Walled Intercom Air Conditioner Built In Braai Alarm System Security Gate Indoor Beams Outdoor Beams Burglar Bars Granite Tops Breakfast Nook Eye Level Oven Extractor Fan Washing Machine Connection Walk In Closet Linen Room Entrance Hall Scullery Laundry



<https://richardsbay.seeff.com>