

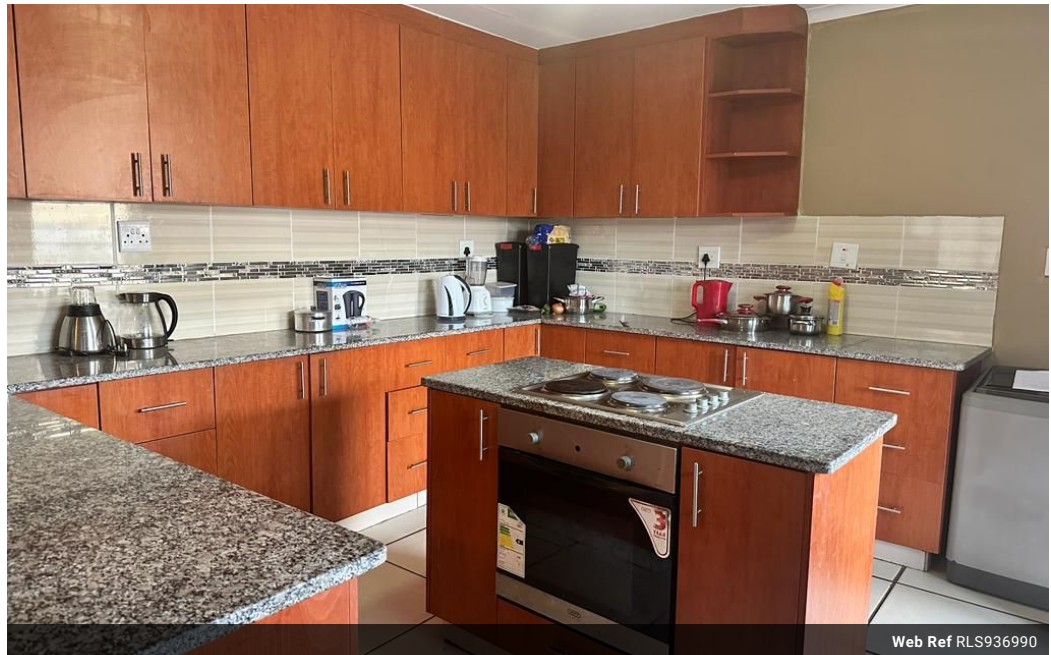


Sebenzile Mthethwa
063 579 6915
sebe.mthethwa@seeff.com

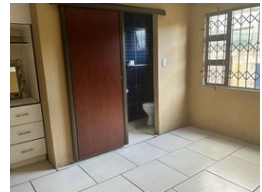
Contact Richards Bay

035 7890490

Lira Link Rd, Unit 2 Montego Park, Richards Bay Central, Richards Bay, 3900



Web Ref RLS936990



R1,490,000

6 6

Monthly Bond Repayment R15,379.61
Calculated over 20 years at 11% with no deposit.

Transfer Costs R45,485.00 **Bond Costs** R28,990.00

These calculations are only a guide. Please ask your conveyancer for exact calculations.

Monthly Rates R1,000

Perfect investment house for sale

Calling for all investors!

This property offers six bedrooms with an ensuite in each room, a lounge, and a fully fitted kitchen. Each room can be rented out for R2500.00.

This property is close to the main road and within walking distance from schools and the library.

Call today for your viewing appointment!

Features

Pets Allowed Yes

Interior
Bedrooms 6
Bathrooms 6
Kitchens 1
Recep. Rooms 1
Furnished No

Exterior
Security No
Pool No
Views False

Sizes
Floor Size 97m²
Land Size 392m²

Extras

Totally Fenced Burglar Bars Granite Tops Breakfast Nook