

**Seeff**



**Sebenzile Mthethwa**  
063 579 6915  
sebe.mthethwa@seeff.com

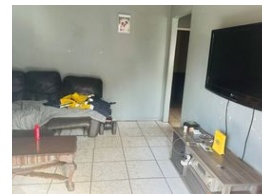
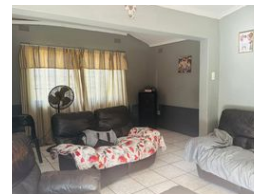
Contact Richards Bay

035 7890490

Lira Link Rd, Unit 2 Montego Park, Richards Bay Central, Richards Bay, 3900



Web Ref RLS941026



R855,000

3 1

**Monthly Bond Repayment** R8,825.21  
Calculated over 20 years at 11% with no deposit.

**Transfer Costs** R28,244.00 **Bond Costs** R21,450.00

These calculations are only a guide. Please ask your conveyancer for exact calculations.

**Monthly Rates** R900

### 3 Bedroom house in Aquadene

Situated at the entrance of Aquadene lies this spacious home within walking distance from the main road, shops, and schools.

This house offers you three bedrooms, one bathroom, a lounge, a dining room, and a kitchen. This house is perfect for a small family and is well-priced. The kitchen does need a little bit of TLC.

Call today for your viewing appointment.

### Features

**Pets Allowed** Yes

**Interior**  
Bedrooms 3  
Bathrooms 1  
Kitchens 1  
Recep. Rooms 2  
Furnished No

**Exterior**  
Security No  
Pool No  
Views False

**Sizes**  
Floor Size 97m<sup>2</sup>  
Land Size 393m<sup>2</sup>