

Seeff



Koketso Phaswane
078 033 1124
koketso.phaswane@seeff.com

Contact Richards Bay

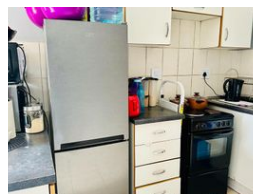
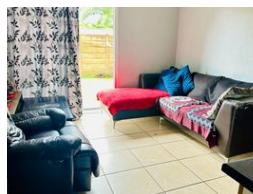
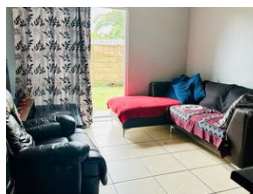
035 7890490

Lira Link Rd, Unit 2 Montego Park, Richards Bay Central, Richards Bay, 3900

2 Bedroom Apartment For Sale in Arboretum



Web Ref RLS949057



R699,000

2 1

Monthly Bond Repayment R7,096.45

Calculated over 20 years at 10.75% with no deposit.

Transfer Costs R23,730.00 **Bond Costs** R17,680.00

These calculations are only a guide. Please ask your conveyancer for exact calculations.

Monthly Levy R1,200 **Monthly Rates** R980

Perfect starter home in a popular area

Welcome to this exceptional two-bedroom apartment nestled in the neighborhood of Arboretum.

When you step inside this apartment you will find the kitchen, lounge, two bedrooms, and one bathroom.

This is a perfect apartment for a small family looking for something cozy or for first-time buyers. This flat apartment is close to schools and most amenities.

Call today for your viewing appointment and let's make this apartment your forever home!

Features

Interior

Bedrooms	2
Bathrooms	1
Kitchens	1
Recep. Rooms	1
Furnished	No

Exterior

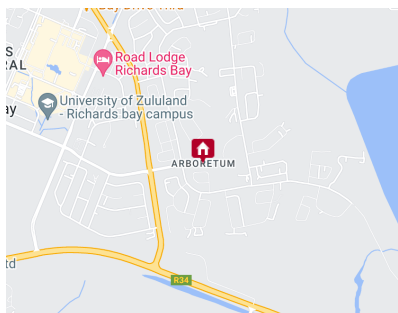
Security	No
Pool	No
Views	False

Sizes

Floor Size	46m²
Land Size	5,428m²

Extras

Electric Gate Totally Walled



<https://richardsbay.seeff.com>