

# Seeff



**Jessica Liebenberg**  
0832360712  
jessica.liebenberg@seeff.com

Contact Richards Bay

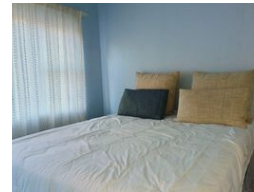
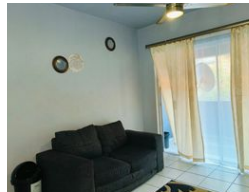
035 7890490

Lira Link Rd, Unit 2 Montego Park, Richards Bay Central, Richards Bay, 3900

2 Bedroom Apartment For Sale in Arboretum



Web Ref RLS951931



R890,000

**Monthly Bond Repayment** R8,885.58

Calculated over 20 years at 10.5% with no deposit.

**Transfer Costs** R28,334.00

**Bond Costs** R21,450.00

These calculations are only a guide. Please ask your conveyancer for exact calculations.

**Monthly Levy** R890

**Monthly Rates** R1,100

🛏️ 2 🚿 1 🚗 1

Perfect starter home in a popular area

Seeff Richards Bay presents this 88-square-meter two-bedroom apartment within walking distance of the CBD.

Bringing you large open plan living this home also had a garage providing safety for your vehicle as well as extra storage space.

This quaint home is one of the few properties available that is ready to move in and gives you the grace not to spend extra finances on maintenance.

Call today for the first appointment....

## Features

### Interior

Bedrooms	2
Bathrooms	1
Kitchens	1
Recep. Rooms	1
Furnished	No

### Exterior

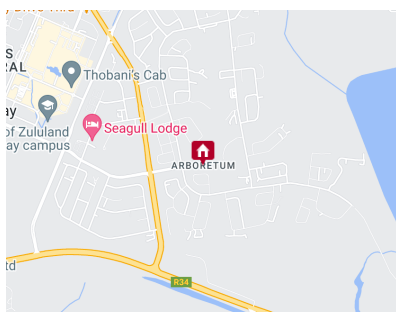
Garages	1
Security	No
Pool	No
Views	False

### Sizes

Floor Size	90m²
Land Size	7,441m²

### Extras

Electric Gate Totally Walled Electric Fencing Breakfast Nook Dishwasher Connection Washing Machine Connection



<https://richardsbay.seeff.com>