

# Seeff



**Koketso Phaswane**  
078 033 1124  
koketso.phaswane@seeff.com

Contact Richards Bay

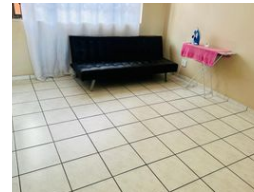
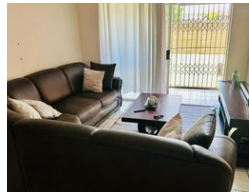
035 7890490

Lira Link Rd, Unit 2 Montego Park, Richards Bay Central, Richards Bay, 3900

## 3 Bedroom Apartment For Sale in Arboretum



Web Ref RLS952123



R990,000

3 2 1

**Monthly Bond Repayment** R10,050.77

Calculated over 20 years at 10.75% with no deposit.

**Transfer Costs** R30,412.00 **Bond Costs** R23,335.00

These calculations are only a guide. Please ask your conveyancer for exact calculations.

**Monthly Levy** R747 **Monthly Rates** R1,200

Perfect starter home in a popular area

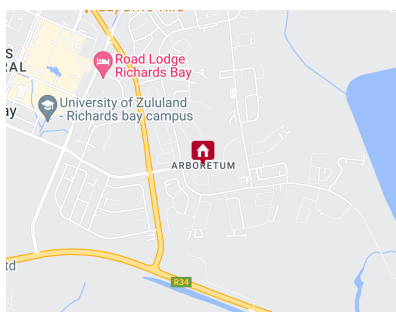
This spacious three-bedroom unit offers you fully tiled bedrooms with fully fitted built-in cupboards and two bathrooms of which one is an ensuite with the main bedroom, a lounge area, a dining room, and a kitchen.

This unit is ideally located and perfect for an investment.

Make the smart move, and contact me today for your viewing appointment!  
Home is our story

### Features

Interior		Exterior		Sizes	
Bedrooms	3	Garages	1	Floor Size	110m <sup>2</sup>
Bathrooms	2	Security	No	Land Size	8,335m <sup>2</sup>
Kitchens	1	Pool	No		
Recep. Rooms	2	Views	False		
Furnished	No				
<b>Extras</b>					
Electric Gate Totally Walled					



<https://richardsbay.seeff.com>