



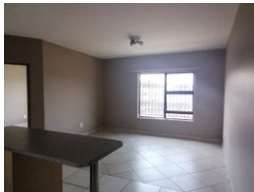
Koketso Phaswane  
078 033 1124  
koketso.phaswane@seeff.com

Contact Richards Bay  
035 7890490  
Lira Link Rd, Unit 2 Montego Park, Richards Bay Central, Richards Bay, 3900

2 Bedroom Apartment For Sale in Arboretum



Web Ref RLS954063



R780,000

2 1

**Monthly Bond Repayment** R7,918.79  
Calculated over 20 years at 10.75% with no deposit.  
**Transfer Costs** R25,898.00    **Bond Costs** R19,565.00  
These calculations are only a guide. Please ask your conveyancer for exact calculations.  
**Monthly Levy** R950    **Monthly Rates** R900

Perfect starter home

Two-bedroom and one-bathroom apartment perfectly located in the CBD area.  
Ideal for investment or a first-time buyer. Fully fitted and tiled, neat, and ready to move in!  
Boasting an open plan lounge and kitchen making this unit spacious and a perfect flow throughout the whole unit.  
Do not wait too long to make that smart move as this apartment will sell fast.  
Contact me today for your viewing appointment.  
Home is our story

Features

Interior		Exterior		Sizes	
Bedrooms	2	Carports / Parkings	1	Floor Size	53m²
Bathrooms	1	Security	No	Land Size	6,829m²
Kitchens	1	Pool	No		
Recep. Rooms	1	Views	False		
Furnished	No				
<b>Extras</b>					
Electric Gate Totally Walled Guard					