

# Seeff



**Renaav Moodley**  
083 236 0712  
renaav.moodley@seeff.com

Contact Richards Bay

035 7890490

Lira Link Rd, Unit 2 Montego Park, Richards Bay Central, Richards Bay, 3900

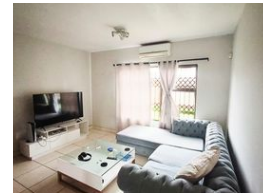
2 Bedroom Apartment For Sale in Arboretum

UNDER OFFER



SOLE MANDATE

Web Ref RLS956520



R789,000

2 1

**Monthly Bond Repayment** R8,143.97  
Calculated over 20 years at 11% with no deposit.

**Transfer Costs** R25,898.00 **Bond Costs** R19,565.00  
These calculations are only a guide. Please ask your conveyancer for exact calculations.

**Monthly Levy** R1,000 **Monthly Rates** R980

Exclusive Mandate - 2 bedroom ground floor unit for sale in arboretum.

Exclusive Mandate - Discover the epitome of comfortable living in this charming 2-bedroom, 1-bathroom ground-floor apartment nestled in the prestigious Arboretum.

Situated in a highly sought-after complex, this residence boasts a beautifully maintained kitchen and lounge area, offering ample space for relaxation and entertainment.

Don't miss the opportunity to make this your dream home.

Make contact today for your viewing appointment

## Features

### Interior

Bedrooms	2
Bathrooms	1
Kitchens	1
Recep. Rooms	1
Furnished	No

### Exterior

Carports / Parkings	1
Security	No
Pool	No
Views	False

### Sizes

Floor Size	51m <sup>2</sup>
Land Size	5,963m <sup>2</sup>

### Extras

Electric Gate Air Conditioner Electric Fencing Stove Eye Level Oven Washing Machine Connection

<https://richardsbay.seeff.com>