



Renaav Moodley
083 236 0712
renaav.moodley@seeff.com

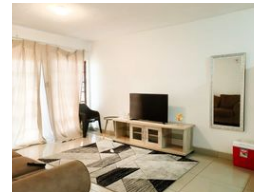
Contact Richards Bay

035 7890490

Lira Link Rd, Unit 2 Montego Park, Richards Bay Central, Richards Bay, 3900



Web Ref RLS958851



R859,000

2 1

Monthly Bond Repayment R8,866.50
Calculated over 20 years at 11% with no deposit.

Transfer Costs R28,244.00 **Bond Costs** R21,450.00

These calculations are only a guide. Please ask your conveyancer for exact calculations.

Monthly Levy R1,000 **Monthly Rates** R1,000

2 bedroom ground floor unit for sale in Arboretum.

Discover the epitome of comfortable living in this charming two-bedroom, one-bathroom ground-floor apartment nestled in the prestigious Arboretum.

Situated in a highly sought-after complex, this residence boasts a beautifully maintained kitchen and lounge area, offering ample space for relaxation and entertainment.

Don't miss the opportunity to make this your dream home.

Contact me today for your viewing appointment!

Features

Interior

Bedrooms	2
Bathrooms	1
Kitchens	1
Recep. Rooms	1
Furnished	No

Exterior

Carports / Parkings	1
Security	No
Pool	No
Views	False

Sizes

Floor Size	69m ²
Land Size	10,175m ²

Extras

Electric Gate Totally Fenced