



Renaav Moodley
 083 236 0712
 renaav.moodley@seeff.com

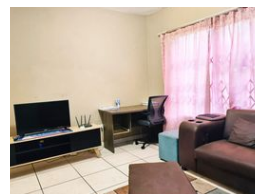
Contact Richards Bay

035 7890490

Lira Link Rd, Unit 2 Montego Park, Richards Bay Central, Richards Bay, 3900



Web Ref RLS962810



R790,000

2 1

Monthly Bond Repayment R8,154.29
 Calculated over 20 years at 11% with no deposit.

Transfer Costs R25,898.00 **Bond Costs** R19,565.00
 These calculations are only a guide. Please ask your conveyancer for exact calculations.

Monthly Levy R750 **Monthly Rates** R1,100

Perfect starter home in a popular area

Welcome to this charming ground-floor apartment nestled in the heart of Arboretum Centre CBD.

This tastefully appointed residence features two cozy bedrooms, ideal for a small family or professionals seeking comfortable living space. The open-plan layout seamlessly integrates a modern kitchen with sleek countertops and ample storage, flowing into a spacious living area perfect for entertaining or relaxing after a long day.

Features

Interior		Exterior		Sizes	
Bedrooms	2	Carports / Parkings	1	Floor Size	53m ²
Bathrooms	1	Security	No	Land Size	6,829m ²
Kitchens	1	Pool	No		
Recep. Rooms	1	Views	False		
Furnished	No				