



**Sebenzile Mthethwa**  
063 579 6915  
sebe.mthethwa@seeff.com

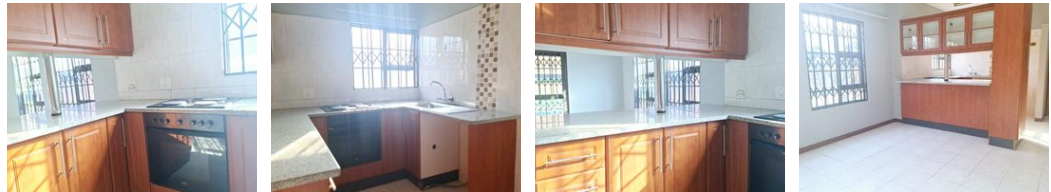
Contact Richards Bay

035 7890490

Lira Link Rd, Unit 2 Montego Park, Richards Bay Central, Richards Bay, 3900



Web Ref RLS963863



R840,000

2 1

**Monthly Bond Repayment** R8,670.38  
Calculated over 20 years at 11% with no deposit.

**Transfer Costs** R28,244.00 **Bond Costs** R21,450.00

These calculations are only a guide. Please ask your conveyancer for exact calculations.

**Monthly Levy** R1,109 **Monthly Rates** R1,100

### Perfect starter apartment in Arboretum

This very neat apartment is perfectly located in the heart of Arboretum close to schools and many other amenities.

Boasting two bedrooms with built-in cupboards, one bathroom, a neat and fully fitted kitchen with granite tops, and a lounge area. The property has a carport for your vehicle.

This property is perfect for a small family, a young couple, or someone looking for a good investment property. This apartment will definitely sell fast!

Call now for your viewing appointment.

### Features

Interior		Exterior		Sizes	
Bedrooms	2	Carports / Parkings	1	Floor Size	57m <sup>2</sup>
Bathrooms	1	Security	No	Land Size	14,241m <sup>2</sup>
Kitchens	1	Pool	No		
Recep. Rooms	1	Views	False		
Furnished	No				

### Extras

Electric Gate Totally Walled Granite Tops Stove Washing Machine Connection