



**Koketso Phaswane**  
078 033 1124  
koketso.phaswane@seeff.com

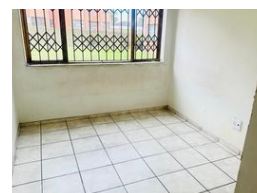
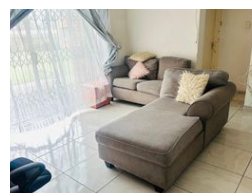
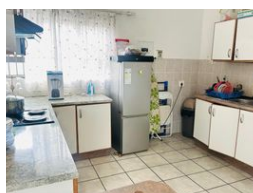
Contact Richards Bay

035 7890490

Lira Link Rd, Unit 2 Montego Park, Richards Bay Central, Richards Bay, 3900



Web Ref RLS972848



R965,000

3   2   1

**Monthly Bond Repayment** R9,960.62  
Calculated over 20 years at 11% with no deposit.

**Transfer Costs** R30,412.00   **Bond Costs** R23,335.00

These calculations are only a guide. Please ask your conveyancer for exact calculations.

**Monthly Levy** R1,150   **Monthly Rates** R1,350

Perfect starter apartment in a popular area

Looking for a spacious property in Arboretum that is well priced, then you have found yourself the perfect one!

This spacious apartment boasts three bedrooms with built-in cupboards and two bathrooms, a spacious lounge area, a dining room, and a spacious fitted kitchen.

This apartment has a single lock-up garage and is situated in a popular area of Arboretum close to schools and many other amenities and within walking distance from town.

Do not wait too long to make the right decision!

Call now for your viewing appointment

### Features

<b>Interior</b>		<b>Exterior</b>		<b>Sizes</b>	
Bedrooms	3	Garages	1	Land Size	4,341m <sup>2</sup>
Bathrooms	2	Security	No		
Kitchens	1	Pool	No		
Recep. Rooms	2	Views	False		
Furnished	No				
<b>Extras</b>					
Electric Gate Totally Walled Stove					