

# Seeff



Koketso Phaswane  
078 033 1124  
koketso.phaswane@seeff.com

Contact Richards Bay

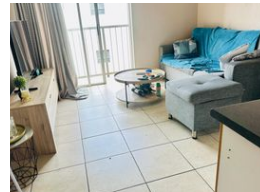
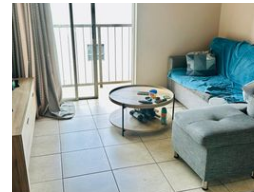
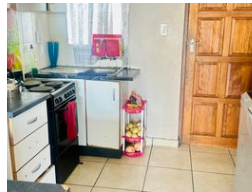
035 7890490

Lira Link Rd, Unit 2 Montego Park, Richards  
Bay Central, Richards Bay, 3900

2 Bedroom Apartment For Sale in Arboretum



Web Ref RLS975210



R725,000

2 1

**Monthly Bond Repayment** R7,238.25

Calculated over 20 years at 10.5% with no deposit.

**Transfer Costs** R25,877.00 **Bond Costs** R19,565.00

These calculations are only a guide. Please ask your conveyancer for exact calculations.

**Monthly Levy** R1,070 **Monthly Rates** R1,200

## Ideal Investment Opportunity

Discover this excellent 2-bedroom unit, perfectly situated in the heart of the CBD.

This fantastic investment opportunity boasts:

Prime Location close proximity to all amenities

Fully Tiled

Built-in Cupboards (BIC)

Don't miss out on this incredible investment opportunity! Contact us to schedule a viewing today!

## Features

### Interior

Bedrooms	2
Bathrooms	1
Kitchens	1
Recep. Rooms	1
Furnished	No

### Exterior

Carports / Parkings	1
Security	No
Pool	No
Views	False

### Extras

Balcony Electric Gate Totally Walled

<https://richardsbay.seeff.com>