

Seeff



Renaav Moodley
083 236 0712
renaav.moodley@seeff.com

Contact Richards Bay

035 7890490

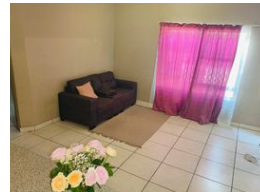
Lira Link Rd, Unit 2 Montego Park, Richards Bay Central, Richards Bay, 3900

2 Bedroom Apartment For Sale in Arboretum



SOLE MANDATE

Web Ref RLS979434



R845,000

2 1

Monthly Bond Repayment R8,721.99
Calculated over 20 years at 11% with no deposit.

Transfer Costs R28,244.00 **Bond Costs** R21,450.00

These calculations are only a guide. Please ask your conveyancer for exact calculations.

Monthly Levy R1,100 **Monthly Rates** R1,000

Exclusive Mandate - Convenience and Luxury in the Heart of Arboretum!

Exclusive Mandate - Discover this stunning 2-bedroom, 1-bathroom ground-floor apartment, perfectly situated in the sought-after suburb of Arboretum. Enjoy the ultimate in convenience, with the CBD just a short walk away.

This beautifully appointed apartment boasts 2 spacious bedrooms with ample storage. 1 modern bathroom. Open-plan living area with sleek kitchen. Ground-floor position with easy access. Secure complex with tranquil surroundings. Walking distance to CBD, shops, and restaurants

Whether you're a young professional, a couple, or an investor, this apartment offers the perfect blend of style, convenience, and location. Don't miss out on this fantastic opportunity to own a piece of Arboretum's vibrant lifestyle!

Contact us today to schedule a viewing!

Features

Interior		Exterior		Sizes	
Bedrooms	2	Carports / Parkings	1	Land Size	6,829m²
Bathrooms	1	Security	No		
Kitchens	1	Pool	No		
Recep. Rooms	1	Views	False		
Furnished	No				

Extras

Totally Walled Air Conditioner Guard House Burglar Bars Breakfast Nook Stove Eye Level Oven
Extractor Fan Washing Machine Connection

<https://richardsbay.seeff.com>