

Seeff



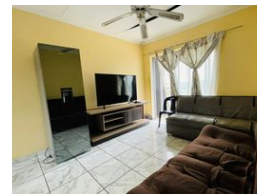
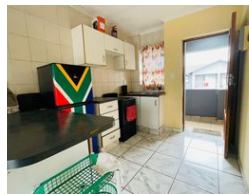
Gugulethu Motha
073 026 5665
gugulethu.motha@seeff.com

Contact Richards Bay

035 7890490

Lira Link Rd, Unit 2 Montego Park, Richards Bay Central, Richards Bay, 3900

2 Bedroom Apartment For Sale in Arboretum



R799,000

2 1

Monthly Bond Repayment R7,977.06

Calculated over 20 years at 10.5% with no deposit.

Transfer Costs R25,877.00 **Bond Costs** R19,565.00

These calculations are only a guide. Please ask your conveyancer for exact calculations.

Monthly Levy R1,200 **Monthly Rates** R1,000

Investment Opportunity

This 2-bedroom flat offers convenient living within walking distance to town. The unit is in fair condition and provides a neat, low-maintenance space that is ideal for comfortable everyday living.

It features two well-sized bedrooms, one bathroom, and a functional layout that makes the most of the available space. An allocated carport is included, ensuring secure parking for your vehicle.

Perfectly positioned close to shops and amenities, this flat is a great opportunity for buyers or investors seeking both value and convenience.

Call now for your appointment to view.

Features

Interior

| | |
|--------------|----|
| Bedrooms | 2 |
| Bathrooms | 1 |
| Kitchens | 1 |
| Recep. Rooms | 1 |
| Furnished | No |

Exterior

| | |
|---------------------|-------|
| Carports / Parkings | 1 |
| Security | No |
| Pool | No |
| Views | False |

Sizes

| | |
|------------|---------------------|
| Floor Size | 46m ² |
| Land Size | 5,428m ² |

Extras

Carport Bath, Toilet and Basin