

# Seeff



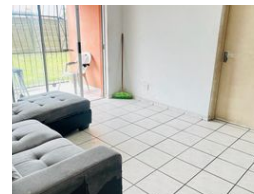
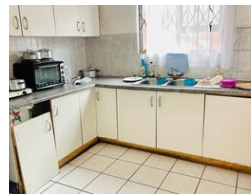
**Koketso Phaswane**  
078 033 1124  
koketso.phaswane@seeff.com

Contact Richards Bay

035 7890490

Lira Link Rd, Unit 2 Montego Park, Richards Bay Central, Richards Bay, 3900

3 Bedroom Apartment For Sale in Arboretum



R980,000

3 2 1

**Monthly Bond Repayment** R9,949.24

Calculated over 20 years at 10.75% with no deposit.

**Transfer Costs** R30,412.00 **Bond Costs** R23,335.00

These calculations are only a guide. Please ask your conveyancer for exact calculations.

**Monthly Levy** R1,200 **Monthly Rates** R900

Spacious CBD Apartment up for grabs! Call today to view

This spacious apartment lies in the ever-so-popular suburb of Arboretum, This property has an open-plan design that promotes airflow and natural light to beam throughout.

Don't let your chance to own this spectacular property slip away!

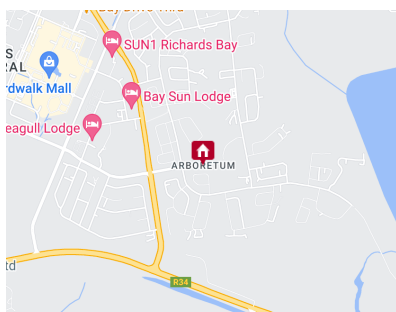
Richards Bay is centrally situated and serves as a perfect base when exploring Zululand. Zululand is rich in diversity and is the ideal holiday destination where nature lovers can explore the internationally acclaimed game reserves and visit spectacular wetlands, and outdoor and sporting enthusiasts can take advantage of the sub-tropical climate, endless beaches, and abundant water bodies and cultural and heritage seekers can visit the Zulu cultural villages, museums, and markets.

## Features

Interior		Exterior		Sizes	
Bedrooms	3	Garages	1	Floor Size	8,335m <sup>2</sup>
Bathrooms	2	Security	No	Land Size	110m <sup>2</sup>
Kitchens	1	Pool	No		
Recep. Rooms	2	Views	False		
Furnished	No				

## Extras

Electric Gate Totally Walled Shower Toiletand Basin Shower Toiletand Basin Bath Toiletand Basin Bath Toiletand Basin Dishwasher Connection Washing Machine Connection



<https://richardsbay.seeff.com>