

**Seeff**



**Sebenzile Mthethwa**  
063 579 6915  
sebe.mthethwa@seeff.com

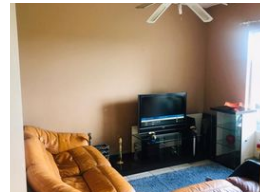
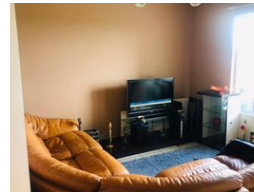
Contact Richards Bay

035 7890490

Lira Link Rd, Unit 2 Montego Park, Richards Bay Central, Richards Bay, 3900



Web Ref RLS922297



R700,000

🛏 2 🚿 1

**Monthly Bond Repayment** R7,225.32  
Calculated over 20 years at 11% with no deposit.

**Transfer Costs** R23,730.00    **Bond Costs** R17,680.00

These calculations are only a guide. Please ask your conveyancer for exact calculations.

**Monthly Rates** R850

Safe & secure apartment in Arboretum

If you are looking for a lock-up and go apartment close to everything, then look no further.

Stunning, neat flat in CBD central, walking distance to town and all amenities. This is an ideal lock-up and go unit in a secure complex with automated gate access.

This neat apartment offers 2 spacious bedrooms, a family bathroom, an open-plan kitchen, and a lounge area. The complex has a communal braai and pool area.

### Features

Interior		Exterior		Sizes	
Bedrooms	2	Carports / Parkings	1	Floor Size	46m <sup>2</sup>
Bathrooms	1	Security	No	Land Size	5,428m <sup>2</sup>
Kitchens	1	Pool	No		
Recep. Rooms	1	Views	False		
Furnished	No				

#### Extras

Electric Gate Totally Walled Bath Toilet and Basin geyser Washing Machine Connection linen cupboard