

Seeff



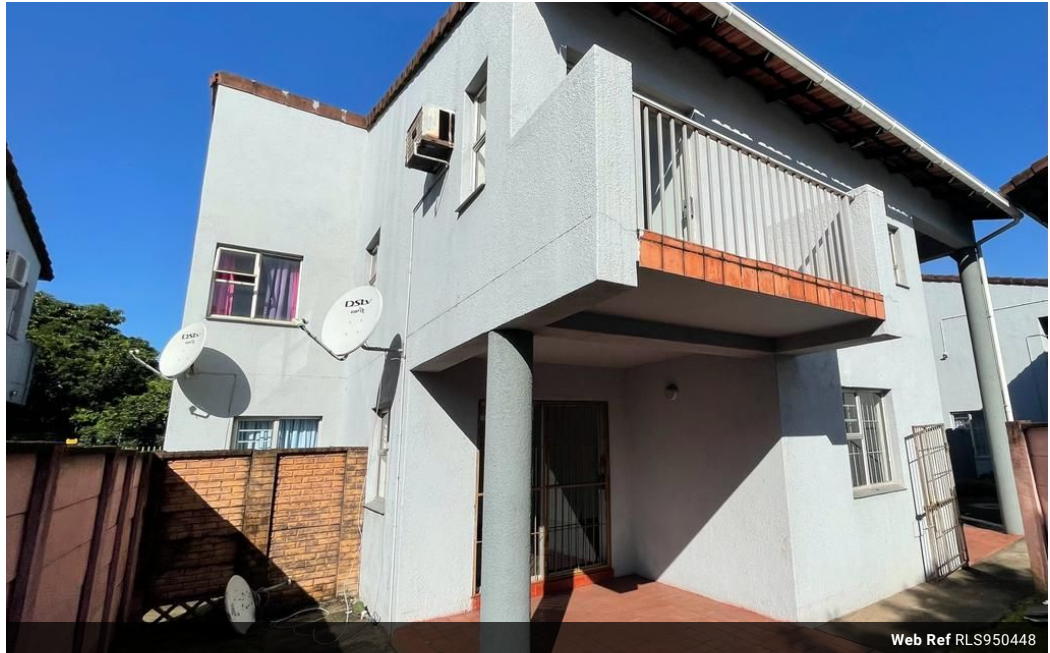
Koketso Phaswane
078 033 1124
koketso.phaswane@seeff.com

Contact Richards Bay

035 7890490

Lira Link Rd, Unit 2 Montego Park, Richards Bay Central, Richards Bay, 3900

3 Bedroom Duplex For Sale in Arboretum



Web Ref RLS950448



R1,025,000

3 Bedrooms 2.5 Bathrooms 1 Garage

Monthly Bond Repayment R10,579.93

Calculated over 20 years at 11% with no deposit.

Transfer Costs R32,749.00 **Bond Costs** R25,220.00

These calculations are only a guide. Please ask your conveyancer for exact calculations.

Monthly Levy R1,465 **Monthly Rates** R1,100

The Perfect Starter Home Or Investment Property!

This property is just what you have been looking for if you are starting your property journey.

Ideal for any family, this 3-bedroom unit features, amongst others, 2.5 bathrooms, open-plan living areas, and a single garage (with separate allocated parking).

Located within a neat & well-run complex this property won't be available for long at this price!

Contact me today to view & get your offer in!
Home is our story

Features

Interior

Bedrooms 3
Bathrooms 2.5
Kitchens 1
Recep. Rooms 1
Furnished No

Exterior

Garages 1
Carports / Parkings 1
Security No
Pool No
Views False

Sizes

Floor Size 126m²
Land Size 24,820m²

Extras

Security Gate



<https://richardsbay.seeff.com>