

Seeff



Sebenzile Mthethwa
063 579 6915
sebe.mthethwa@seeff.com

Contact Richards Bay

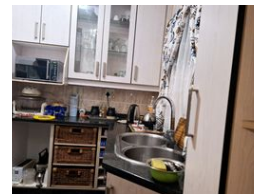
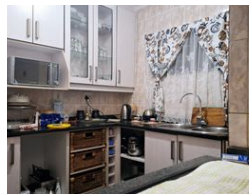
035 7890490

Lira Link Rd, Unit 2 Montego Park, Richards Bay Central, Richards Bay, 3900

2 Bedroom Duplex For Sale in Arboretum



Web Ref RLS960106



R999,000

🛏 2 🚿 2 🚗 1

Monthly Bond Repayment R10,142.14

Calculated over 20 years at 10.75% with no deposit.

Transfer Costs R30,412.00 **Bond Costs** R23,335.00

These calculations are only a guide. Please ask your conveyancer for exact calculations.

Monthly Levy R1,150 **Monthly Rates** R1,100

Perfect starter home in a popular area

Two-bedroom duplex apartment in a secure complex in Arboretum.

As you enter this apartment you will find yourself joy, comfort, and more than enough space for you and your family. This apartment boasts a spacious lounge area, a fully fitted and spacious kitchen, two bedrooms and two bathrooms of which one is an en suite with the main bedroom.

There is also a single lock up garage for your vehicle.

Do not wait too long to make that call as this unit will sell fast!

Contact me today for your viewing appointment.

Features

Interior

Bedrooms	2
Bathrooms	2
Kitchens	1
Recep. Rooms	2
Furnished	No

Exterior

Garages	1
Carports / Parkings	1
Security	No
Pool	No
Views	False

Sizes

Floor Size	125m ²
Land Size	24,488m ²

Extras

Totally Walled Air Conditioner Stove

<https://richardsbay.seeff.com>